



### Synonym

TNFRSF8,CD30,D1S166E,Ki-1

### Source

Human CD30 Protein, Llama IgG2b Fc Tag(TN8-H5250) is expressed from human 293 cells (HEK293). It contains AA Phe 19 - Lys 379 (Accession # [NP\\_001234.2](#)).

Predicted N-terminus: Phe 19

### Molecular Characterization

CD30(Phe 19 - Lys 379) NP_001234.2	LlamaFc(Glu1 - Ser243) AAX73259.1
---------------------------------------	--------------------------------------

This protein carries a llama IgG2b Fc tag at the C-terminus.

The protein has a calculated MW of 66.3 kDa. The protein migrates as 95-120 kDa under reducing (R) condition (SDS-PAGE) due to glycosylation.

### Endotoxin

Less than 0.01 EU per µg by the LAL method.

### Purity

>95% as determined by SDS-PAGE.

### Formulation

Lyophilized from 0.22 µm filtered solution in Tris with Glycine, Arginine and NaCl, pH7.5 with trehalose as protectant.

Contact us for customized product form or formulation.

### Reconstitution

Please see Certificate of Analysis for specific instructions.

*For best performance, we strongly recommend you to follow the reconstitution protocol provided in the CoA.*

### Storage

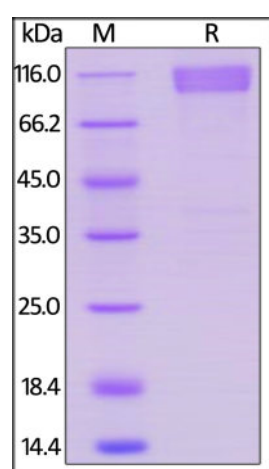
For long term storage, the product should be stored at lyophilized state at -20°C or lower.

*Please avoid repeated freeze-thaw cycles.*

This product is stable after storage at:

- -20°C to -70°C for 12 months in lyophilized state;
- -70°C for 3 months under sterile conditions after reconstitution.

### SDS-PAGE

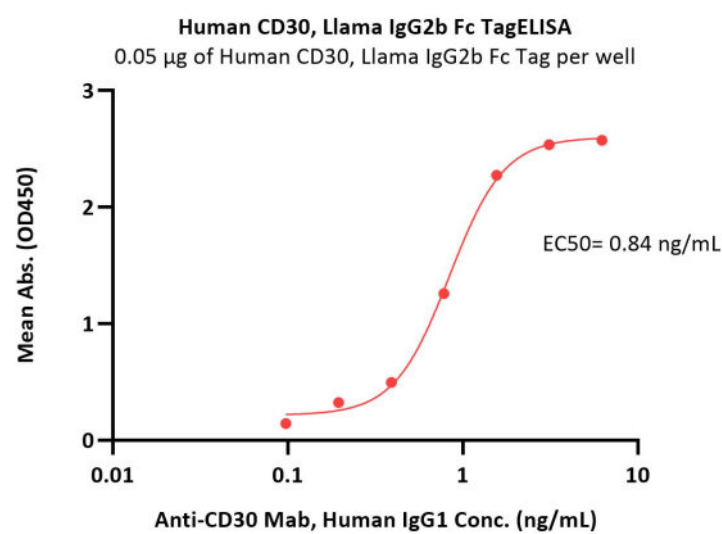


Human CD30 Protein, Llama IgG2b Fc Tag on SDS-PAGE under reducing (R) condition. The gel was stained with Coomassie Blue. The purity of the protein is greater than 95%.

### Bioactivity-ELISA

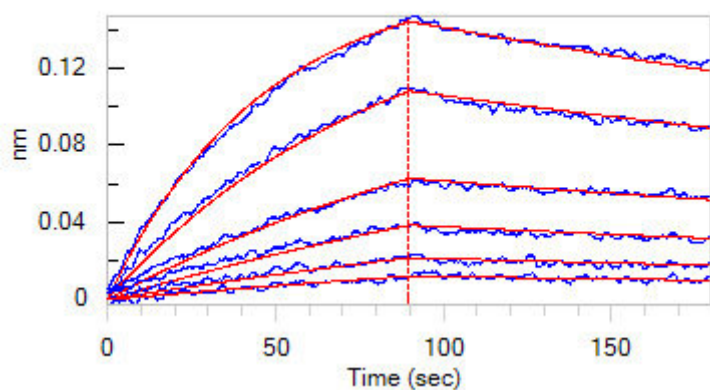
Discounts, Gifts,  
and more!





Immobilized Human CD30 Protein, Llama IgG2b Fc Tag (Cat. No. TN8-H5250) at 0.5 µg/mL (100 µL/well) can bind Anti-CD30 Mab, Human IgG1 with a linear range of 0.1-1.6 ng/mL (QC tested).

### Bioactivity-BLI



Loaded Human CD30 Ligand, His Tag (Cat. No. CDL-H524b) on HIS1K Biosensor, can bind Human CD30 Protein, Llama IgG2b Fc Tag (Cat. No. TN8-H5250) with an affinity constant of 55.5 nM as determined in BLI assay (ForteBio Octet Red96e) (Routinely tested).

### Background

Human CD30 is also known as TNFRSF8, is a cell membrane protein of the tumor necrosis factor receptor family and tumor marker. TNFRSF-8 is expressed by activated, but not by resting, T and B cells. Also, CD30 is expressed on classical Hodgkin Lymphoma cells together with CD15. CD30 is the receptor for TNFSF8/CD30L. CD30 can interact with TRAF2 and TRAF5, and mediate the signal transduction that leads to the activation of NF-kappa-B. TNFRSF8 may play a role in the regulation of cellular growth and transformation of activated lymphoblasts. TNFRSF8 is a positive regulator of apoptosis, and also has been shown to limit the proliferative potential of autoreactive CD8 effector T cells and protect the body against autoimmunity.

### Clinical and Translational Updates

Discounts, Gifts,  
and more!

