

Human SLC2A1 Full Length Protein, His Tag (Detergent)

Catalog # SL1-H55H3



BIOSYSTEMS
Acro

Synonym

CSE, DYT17, DYT18, DYT9, EIG12, GLUT, GLUT-1, GLUT1, GLUT1DS, HTLVR, PED, SDCHCN

Source

Human SLC2A1 Full Length Protein, His Tag(SL1-H55H3) is expressed from Baculovirus-Insect cells. It contains AA Glu 2 - Val 492 (Accession # [P11166](#)). Predicted N-terminus: Glu 2

Molecular Characterization

SLC2A1(Glu 2 - Val 492)
P11166 Poly-his

This protein carries a polyhistidine tag at the C-terminus.

The protein has a calculated MW of 56.0 kDa. The protein migrates as 43-45 kDa and 55-80 kDa when calibrated against [Star Ribbon Pre-stained Protein Marker](#) under reducing (R) condition (SDS-PAGE) due to glycosylation.

Endotoxin

Less than 1.0 EU per µg by the LAL method.

Purity

>90% as determined by SDS-PAGE.

Formulation

This product is not suitable for cell based experiments due to cytotoxicity of DDM.

DDM and CHS are INDISPENSABLE to keep membrane protein soluble and active, under no circumstance should you remove DDM and CHS.

DDM/CHS buffer (DC-11) is sold separately and not included in protein, and please contact us if you need the buffer.

If glycerol is not compatible to your application, remove glycerol just before immediate experiment, and NEVER store glycerol-free protein solution.

Supplied as 0.2 µm filtered solution in 50 mM HEPES, 150 mM NaCl, DDM, pH7.5, CHS with glycerol as protectant.

Contact us for customized product form or formulation.

Shipping

This product is supplied and shipped with dry ice, please inquire the shipping cost.

Storage

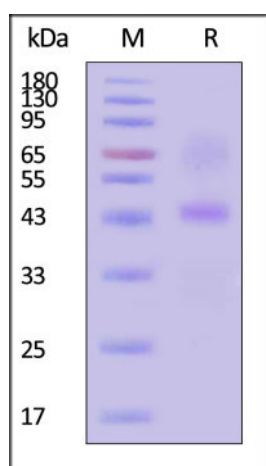
Please avoid repeated freeze-thaw cycles.

This product is stable after storage at:

- The product MUST be stored at -70°C or lower upon receipt;
- -70°C for 3 months under sterile conditions.

****The DDM/CHS buffer (Cat. No. [DC-11](#)) is sold separately and not included in protein, you can follow [this link](#) for product information.**

SDS-PAGE



Human SLC2A1 Full Length Protein, His Tag on SDS-PAGE under reducing (R) condition. The gel was stained with Coomassie Blue. The purity of the protein is greater than 90% (With [Star Ribbon Pre-stained Protein Marker](#)).

Bioactivity-ELISA

Discounts, Gifts,
and more!

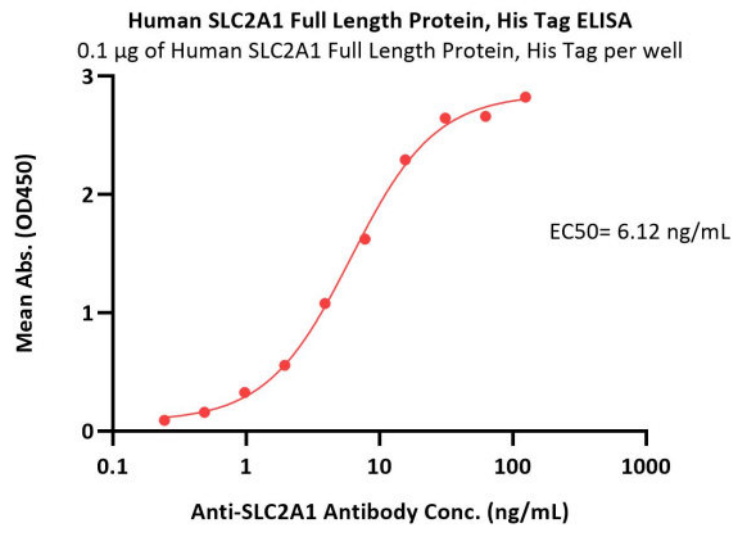


Human SLC2A1 Full Length Protein, His Tag (Detergent)

Catalog # SL1-H55H3

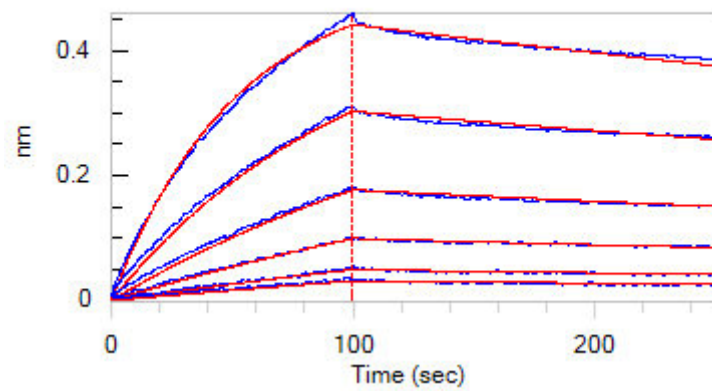


Acro
BIOSYSTEMS



Immobilized Human SLC2A1 Full Length Protein, His Tag (Cat. No. SL1-H55H3) at 1 µg/mL (100 µL/well) on a Nickel Coated plate can bind Anti-SLC2A1 Antibody with a linear range of 0.2-16 ng/mL (QC tested).

Bioactivity-BLI



Loaded Anti-SLC2A1 Antibody on AMC Biosensor, can bind Human SLC2A1 Full Length Protein, His Tag (Cat. No. SL1-H55H3) with an affinity constant of 29.3 nM as determined in BLI assay (ForteBio Octet R8) (Routinely tested).

Background

This gene encodes a major glucose transporter in the mammalian blood-brain barrier. The encoded protein is found primarily in the cell membrane and on the cell surface, where it can also function as a receptor for human T-cell leukemia virus (HTLV) I and II. Mutations in this gene have been found in a family with paroxysmal exertion-induced dyskinesia. [provided by RefSeq, Apr 2013].

Clinical and Translational Updates

**Discounts, Gifts,
and more!**



>> www.acrobiosystems.com