



## Synonym

CD33 antigen-like 3, SIGLEC-15, CD33L3, sialic acid-binding Ig-like lectin 15, Siglec15, Siglec-15

## Source

Mouse Siglec-15, His Tag (SG5-M52H7) is expressed from human 293 cells (HEK293). It contains AA Arg 24 - Thr 262 (Accession # [A7E1W8-1](#)).

Predicted N-terminus: Arg 24

## Molecular Characterization

Siglec-15(Arg 24 - Thr 262)  
A7E1W8-1 Poly-his

This protein carries a polyhistidine tag at the C-terminus.

The protein has a calculated MW of 27.5 kDa. The protein migrates as 33-40 kDa under reducing (R) condition (SDS-PAGE) due to glycosylation.

## Endotoxin

Less than 1.0 EU per  $\mu\text{g}$  by the LAL method.

## Purity

>90% as determined by SDS-PAGE.

## Formulation

Lyophilized from 0.22  $\mu\text{m}$  filtered solution in PBS with Arginine, pH7.4 with trehalose as protectant.

Contact us for customized product form or formulation.

## Reconstitution

Please see Certificate of Analysis for specific instructions.

*For best performance, we strongly recommend you to follow the reconstitution protocol provided in the CoA.*

## Storage

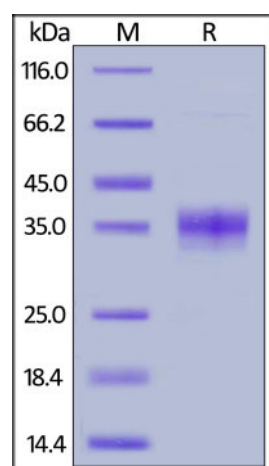
For long term storage, the product should be stored at lyophilized state at  $-20^{\circ}\text{C}$  or lower.

*Please avoid repeated freeze-thaw cycles.*

This product is stable after storage at:

- $-20^{\circ}\text{C}$  to  $-70^{\circ}\text{C}$  for 12 months in lyophilized state;
- $-70^{\circ}\text{C}$  for 3 months under sterile conditions after reconstitution.

## SDS-PAGE



Mouse Siglec-15, His Tag on SDS-PAGE under reducing (R) condition. The gel was stained with Coomassie Blue. The purity of the protein is greater than 90%.

## Bioactivity-ELISA

Discounts, Gifts,  
and more!

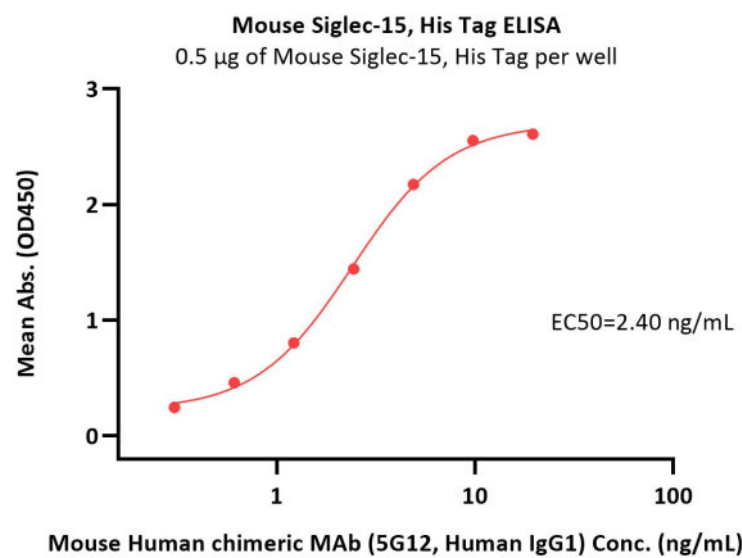


# Mouse Siglec-15 / CD33L3 Protein, His Tag

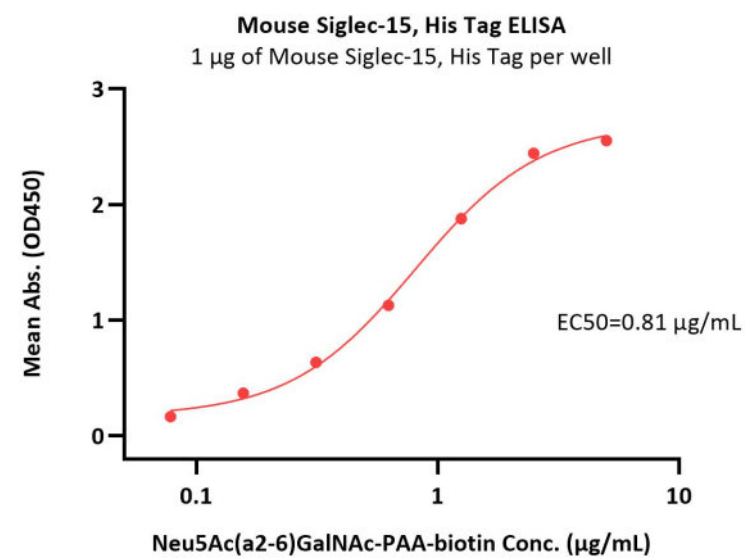
Catalog # SG5-M52H7



BIOSYSTEMS  
**Acro**



Immobilized Mouse Siglec-15, His Tag (Cat. No. SG5-M52H7) at 5 µg/mL (100 µL/well) can bind Monoclonal Anti-Human Siglec-15 (5G12) Antibody, Human IgG1 with a linear range of 0.3-5 ng/mL (QC tested).



Immobilized Mouse Siglec-15, His Tag (Cat. No. SG5-M52H7) at 10 µg/mL (100 µL/well) can bind Neu5Ac(a2-6)GalNAc-PAA-biotin with a linear range of 0.078-1.25 µg/mL (Routinely tested).

## Background

Siglec-15 is a DAP12-associated immunoreceptor, which belongs to the immunoglobulin superfamily and SIGLEC (sialic acid binding Ig-like lectin) family. Siglecs are cell surface proteins that bind sialic acid. They are found primarily on the surface of immune cells and are a subset of the I-type lectins. Siglec-15 consisting of immunoglobulin (Ig)-like domains, transmembrane domain and a short cytoplasmic tail. Siglec-15 is that recognizes sialylated glycans and regulates osteoclast differentiation. Siglec-15 is a potential therapeutic target for osteoporosis and plays a conserved regulatory role in the immune system of vertebrates.

## Clinical and Translational Updates

Please contact us via [TechSupport@acrobiosystems.com](mailto:TechSupport@acrobiosystems.com) if you have any question on this product.

Discounts, Gifts,  
and more!



[www.acrobiosystems.com](http://www.acrobiosystems.com)

11/29/2023