



### Synonym

CD33 antigen-like 3, SIGLEC-15, CD33L3, sialic acid-binding Ig-like lectin 15, Siglec15, Siglec-15

### Source

Rhesus macaque Siglec-15 Protein, Fc Tag(SG5-C5253) is expressed from human 293 cells (HEK293). It contains AA Phe 20 - Thr 263 (Accession # [F7ETM4](#)).

Predicted N-terminus: Phe 20

### Molecular Characterization

Siglec-15(Phe 20 - Thr 263) F7ETM4	Fc(Pro 100 - Lys 330) P01857
---------------------------------------	---------------------------------

This protein carries a human IgG1 Fc tag at the C-terminus.

The protein has a calculated MW of 52.7 kDa. The protein migrates as 60-65 kDa under reducing (R) condition (SDS-PAGE) due to glycosylation.

### Endotoxin

Less than 1.0 EU per µg by the LAL method.

### Purity

>95% as determined by SDS-PAGE.

### Formulation

Lyophilized from 0.22 µm filtered solution in 50 mM Tris, 100 mM Glycine, 150 mM NaCl, pH7.5 with trehalose as protectant.

Contact us for customized product form or formulation.

### Reconstitution

Please see Certificate of Analysis for specific instructions.

*For best performance, we strongly recommend you to follow the reconstitution protocol provided in the CoA.*

### Storage

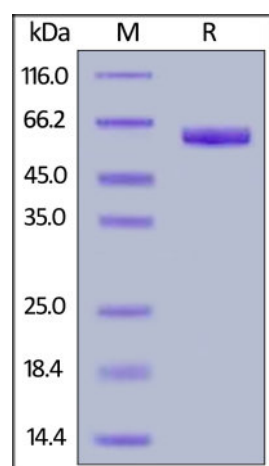
For long term storage, the product should be stored at lyophilized state at -20°C or lower.

*Please avoid repeated freeze-thaw cycles.*

This product is stable after storage at:

- -20°C to -70°C for 12 months in lyophilized state;
- -70°C for 3 months under sterile conditions after reconstitution.

### SDS-PAGE

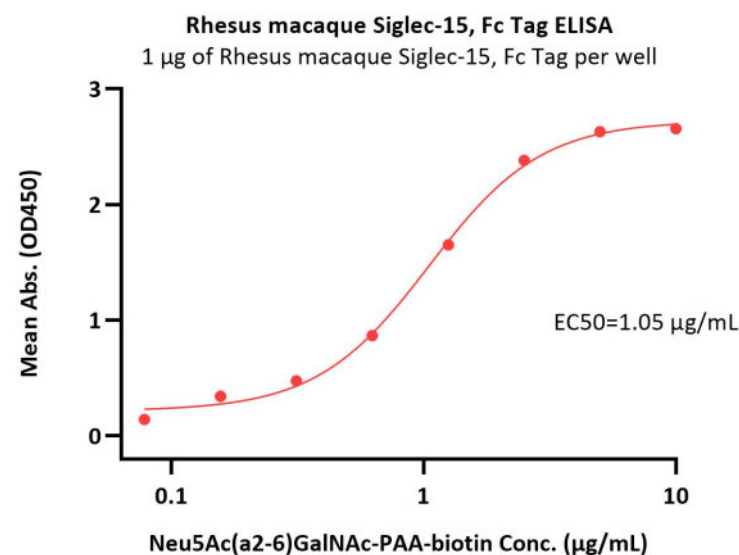
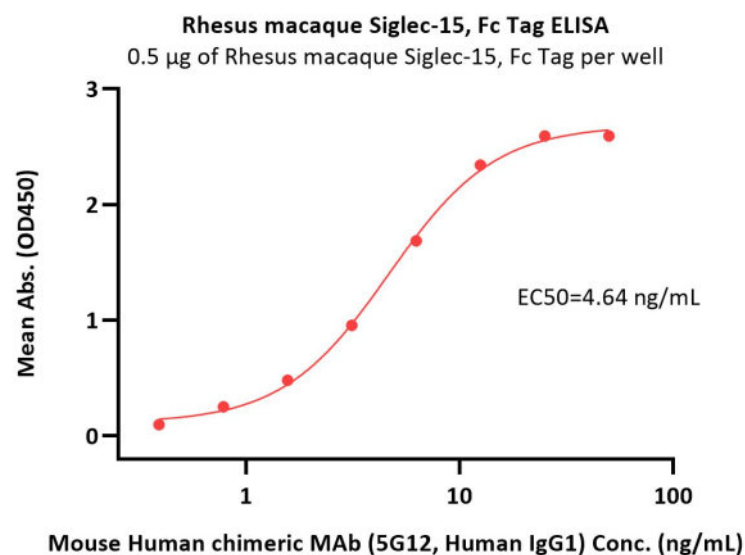


Rhesus macaque Siglec-15 Protein, Fc Tag on SDS-PAGE under reducing (R) condition. The gel was stained with Coomassie Blue. The purity of the protein is greater than 95%.

### Bioactivity-ELISA

Discounts, Gifts,  
and more!

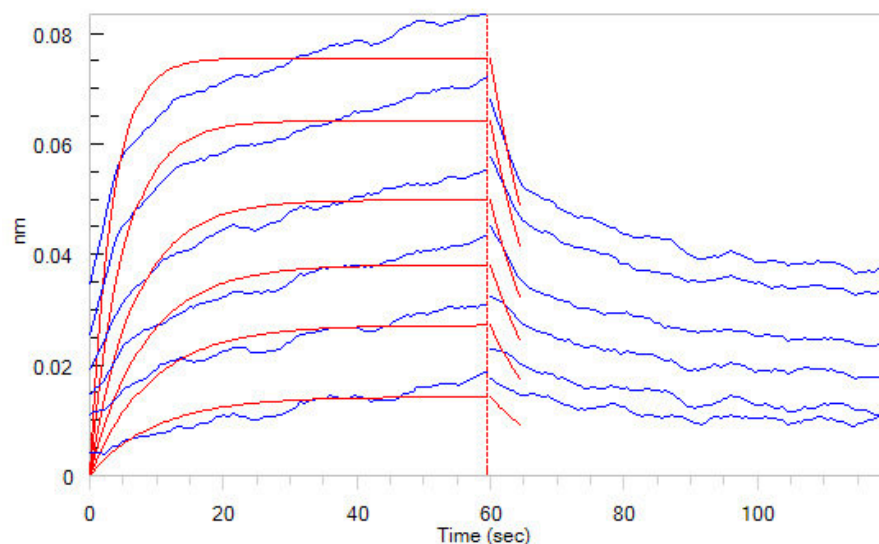




Immobilized Rhesus macaque Siglec-15, Fc Tag (Cat. No. SG5-C5253) at 5 µg/mL (100 µL/well) can bind Mouse Human chimeric MAb (5G12, Human IgG1) with a linear range of 0.4-6 ng/mL (QC tested).

Immobilized Rhesus macaque Siglec-15, Fc Tag (Cat. No. SG5-C5253) at 10 µg/mL (100 µL/well) on Diamond Protein A Protein, His Tag precoated (0.5 µg/well) plate, can bind Neu5Ac(a2-6)GalNAc-PAA-biotin with a linear range of 0.078-1.25 µg/mL (Routinely tested).

## Bioactivity-BLI



Loaded Rhesus macaque Siglec-15 Protein, Fc Tag (Cat. No. SG5-C5253) on ProteinA Biosensor, can bind Neu5Ac(a2-6)GalNAc-PAA-biotin with an affinity constant of 0.62 µM as determined in BLI assay (ForteBio Octet Red96e) (Routinely tested).

## Background

Siglec-15 is a DAP12-associated immunoreceptor, which belongs to the immunoglobulin superfamily and SIGLEC (sialic acid binding Ig-like lectin) family. Siglecs are cell surface proteins that bind sialic acid. They are found primarily on the surface of immune cells and are a subset of the I-type lectins. Siglec-15 consisting of immunoglobulin (Ig)-like domains, transmembrane domain and a short cytoplasmic tail. Siglec-15 is that recognizes sialylated glycans and regulates osteoclast differentiation. Siglec-15 is a potential therapeutic target for osteoporosis and plays a conserved regulatory role in the immune system of vertebrates.

## Clinical and Translational Updates

Discounts, Gifts,  
and more!

