



Source

Anti-SARS-CoV-2 Spike S1 Antibody, Mouse IgG1 (AS58) (S1N-S58A1), originally from mouse immunized with recombinant SARS-CoV-2 Spike S1 protein, is produced from hybridoma.

Clone

AS58

Species

Mouse

Isotype

Mouse IgG1 | Kappa

Conjugate

Unconjugated

Antibody Type

Hybridoma Monoclonal

Reactivity

Virus

Specificity

This product is a specific antibody against SARS-CoV-2 Spike protein RBD domain. No cross-reactivity is detected with Spike protein RBD domain of other coronaviruses, including SARS-CoV, MERS-CoV, HCoV-229E, HCoV-NL63, HCoV-OC43 and HCoV-HKU1.

Application

Application	Recommended Usage
ELISA	0.1-10 ng/mL

Purity

>95% as determined by SDS-PAGE.

Purification

Protein A purified/ Protein G purified

Formulation

Lyophilized from 0.22 µm filtered solution in PBS, pH7.4 with trehalose as protectant.

Contact us for customized product form or formulation.

Reconstitution

Please see Certificate of Analysis for specific instructions.

For best performance, we strongly recommend you to follow the reconstitution protocol provided in the CoA.

Storage

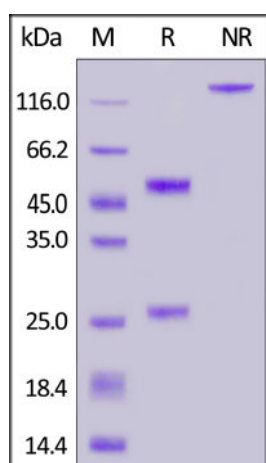
For long term storage, the product should be stored at lyophilized state at -20°C or lower.

Please avoid repeated freeze-thaw cycles.

This product is stable after storage at:

- -20°C to -70°C for 12 months in lyophilized state;
- -70°C for 3 months under sterile conditions after reconstitution.

SDS-PAGE



Discounts, Gifts,
and more!



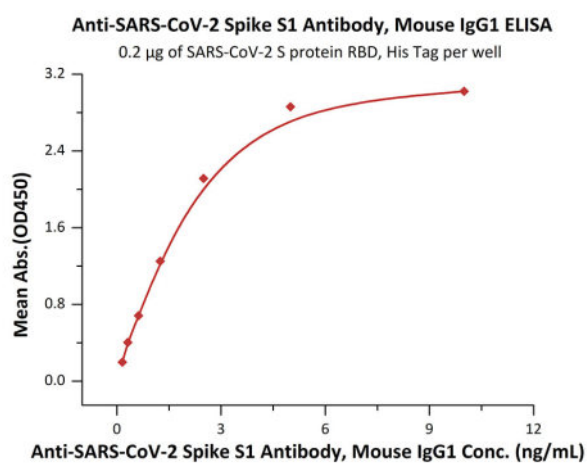
Anti-SARS-CoV-2 Spike S1 Antibody, Mouse IgG1 (AS58)

Catalog # S1N-S58A1



Anti-SARS-CoV-2 Spike S1 Antibody, Mouse IgG1 (AS58) on SDS-PAGE under reducing (R) and non-reducing (NR) conditions. The gel was stained with Coomassie Blue. The purity of the protein is greater than 95%.

Bioactivity-ELISA



Immobilized SARS-CoV-2 S protein RBD, His Tag (Cat. No. SPD-C52H1) at 2 µg/mL (100 µL/well) can bind Anti-SARS-CoV-2 Spike S1 Antibody, Mouse IgG1 (AS58) (Cat. No. S1N-S58A1) with a linear range of 0.08-3 ng/mL (QC tested).

Background

It's been reported that Coronavirus can infect the human respiratory epithelial cells through interaction with the human ACE2 receptor. The spike protein is a large type I transmembrane protein containing two subunits, S1 and S2. S1 mainly contains a receptor binding domain (RBD), which is responsible for recognizing the cell surface receptor. S2 contains basic elements needed for the membrane fusion. The S protein plays key parts in the induction of neutralizing-antibody and T-cell responses, as well as protective immunity.

Clinical and Translational Updates

Discounts, Gifts,
and more!

