



Source

Anti-SARS-CoV-2 Spike RBD Antibody, Chimeric mAb, Human IgA1 (AM130) is a chimeric monoclonal antibody combining the constant domains of the human IgA1 molecule with mouse variable regions.

Clone

AM130

Isotype

Human IgA1 | Human Kappa

Conjugate

Unconjugated

Reactivity

Virus

Specificity

This product can recognize SARS-CoV-2 and SARS-CoV Spike Protein RBD domain. No cross-reactivity is detected with Spike Protein RBD domain of other coronaviruses, including MERS-CoV, HCoV-229E, HCoV-NL63, HCoV-OC43 and HCoV-HKU1.

Application

Application	Recommended Usage
ELISA	7.8-2000 ng/mL

Purity

>95% as determined by SDS-PAGE.

Purification

Protein A purified/ Protein G purified

Formulation

Lyophilized from 0.22 µm filtered solution in PBS, pH7.4 with trehalose as protectant.

Contact us for customized product form or formulation.

Reconstitution

Please see Certificate of Analysis for specific instructions.

For best performance, we strongly recommend you to follow the reconstitution protocol provided in the CoA.

Storage

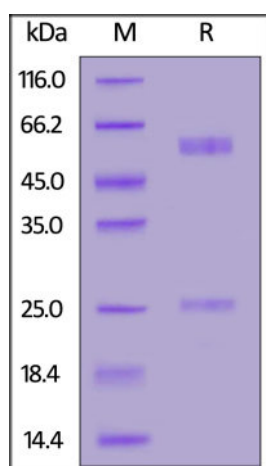
For long term storage, the product should be stored at lyophilized state at -20°C or lower.

Please avoid repeated freeze-thaw cycles.

This product is stable after storage at:

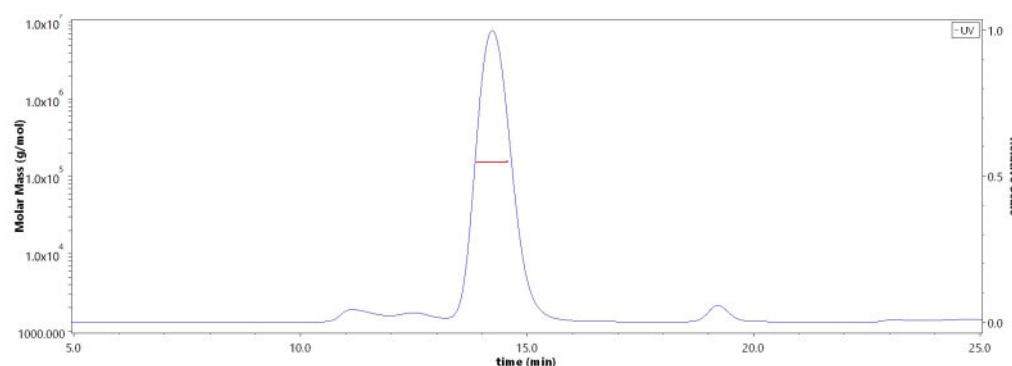
- -20°C to -70°C for 12 months in lyophilized state;
- -70°C for 3 months under sterile conditions after reconstitution.

SDS-PAGE



Anti-SARS-CoV-2 Spike RBD Antibody, Chimeric mAb, Human IgA1 (AM130) on SDS-PAGE under reducing (R) condition. The gel was stained with Coomassie Blue. The purity of the protein is greater than 95%.

SEC-MALS

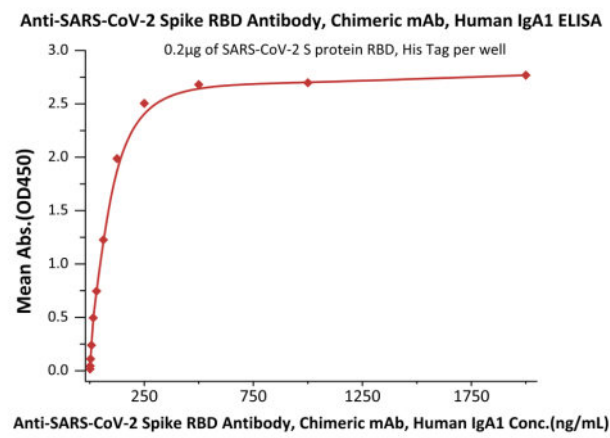


The purity of Anti-SARS-CoV-2 Spike RBD Antibody, Chimeric mAb, Human IgA1 (AM130) (Cat. No. S1N-M164) is more than 85% and the molecular weight of this protein is around 145-160 kDa verified by SEC-MALS.

[Report](#)

Bioactivity-ELISA





Immobilized SARS-CoV-2 S protein RBD, His Tag (Cat. No. SPD-C52H1) at 2 µg/mL (100 µL/well) can bind Anti-SARS-CoV-2 Spike RBD Antibody, Chimeric mAb, Human IgA1 (AM130) (Cat. No. S1N-M164) with a linear range of 4-125 ng/mL (QC tested).

Background

It's been reported that Coronavirus can infect the human respiratory epithelial cells through interaction with the human ACE2 receptor. The spike protein is a large type I transmembrane protein containing two subunits, S1 and S2. S1 mainly contains a receptor binding domain (RBD), which is responsible for recognizing the cell surface receptor. S2 contains basic elements needed for the membrane fusion. The S protein plays key parts in the induction of neutralizing-antibody and T-cell responses, as well as protective immunity.

Clinical and Translational Updates

Discounts, Gifts,
and more!

