



## Synonym

PDL2,PD-L2,Butyrophilin B7-DC,CD273,PDCD1 ligand 2,PDCD1L2,PDCD1LG2

## Source

Biotinylated Human PD-L2, Avitag,His Tag(PD2-H82E8) is expressed from human 293 cells (HEK293). It contains AA Leu 20 - Pro 219 (Accession # [AAI13679](#)).

Predicted N-terminus: Leu 20

## Molecular Characterization

PD-L2(Leu 20 - Pro 219)  
AAI13679

Avi Poly-his

This protein carries an Avi tag (Avitag™) at the C-terminus, followed by a polyhistidine tag.

The protein has a calculated MW of 25.2 kDa. The protein migrates as 33-45 kDa under reducing (R) condition (SDS-PAGE) due to glycosylation.

## Labeling

*Biotinylation of this product is performed using Avitag™ technology. Briefly, the single lysine residue in the Avitag is enzymatically labeled with biotin.*

## Protein Ratio

Passed as determined by the HABA assay / binding ELISA.

## Application

PD2-H82E8 works best for experiments that test the binding between PD-L2 and candidate antibodies, such as biopanning and other relevant assays.

This product is NOT suitable for testing PD1-PDL2 binding. For this type of application, we strongly recommend you to choose PD2-H82F6 as an alternative.

## Endotoxin

Less than 1.0 EU per µg by the LAL method.

## Purity

>95% as determined by SDS-PAGE.

## Formulation

Lyophilized from 0.22 µm filtered solution in PBS, pH7.4 with trehalose as protectant.

Contact us for customized product form or formulation.

## Reconstitution

Please see Certificate of Analysis for specific instructions.

*For best performance, we strongly recommend you to follow the reconstitution protocol provided in the CoA.*

## Storage

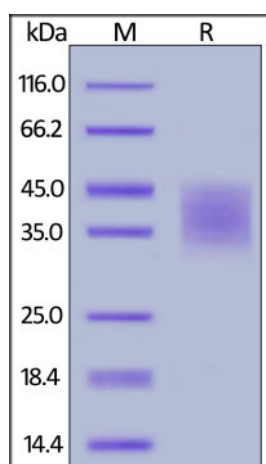
For long term storage, the product should be stored at lyophilized state at -20°C or lower.

*Please avoid repeated freeze-thaw cycles.*

This product is stable after storage at:

- -20°C to -70°C for 12 months in lyophilized state;
- -70°C for 3 months under sterile conditions after reconstitution.

## SDS-PAGE



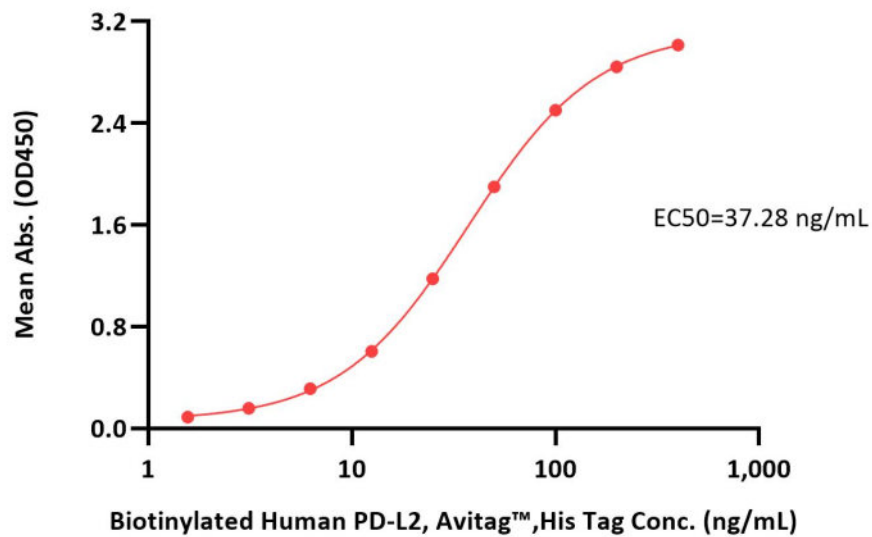
Discounts, Gifts,  
and more!





Biotinylated Human PD-L2, Avitag,His Tag on SDS-PAGE under reducing (R) condition. The gel was stained with Coomassie Blue. The purity of the protein is greater than 95%.

### Bioactivity-ELISA



Immobilized Anti-PD-L2 MAAb (human IgG1) at 2 µg/mL (100 µL/well) can bind Biotinylated Human PD-L2, Avitag,His Tag (Cat. No. PD2-H82E8) with a linear range of 2-50 ng/mL (QC tested).

### Background

Programmed cell death 1 ligand 2 (PD-L2 or PDCD1 ligand 2) is also known as Butyrophilin B7-DC, CD antigen CD273, which belongs to the immunoglobulin superfamily or BTN/MOG family. The expression of PD-L2 is up-regulated by IFNG/IFN-gamma stimulation in monocytes and induced on dendritic cells grown from peripheral blood mononuclear cells with CSF2 and IL-4. PD-L2 Involved in the costimulatory signal, essential for T-cell proliferation and IFNG production in a PDCD1-independent manner. PD-L2 interaction with PDCD1 inhibits T-cell proliferation by blocking cell cycle progression and cytokine production.

### Clinical and Translational Updates

Please contact us via [TechSupport@acrobiosystems.com](mailto:TechSupport@acrobiosystems.com) if you have any question on this product.

Discounts, Gifts,  
and more!

