

Synonym

MET,AUTS9,HGFR,RCCP2,c-Met

Source

Human HGF R, Fc Tag(MET-H5256) is expressed from human 293 cells (HEK293). It contains AA Glu 25 - Thr 932 (Accession # [AAI30421.1](#)). Predicted N-terminus: Glu 25 (α chain) & Ser 308 (β chain Fc chimera)

Molecular Characterization

HGF R(Glu 25 - Thr 932) AAI30421.1	Fc(Pro 100 - Lys 330) P01857
---------------------------------------	---------------------------------

Human HGF R, Fc Tag is fused with Fc fragment of human IgG1 at the C-terminus.

The mature form of HGF R is a disulfide-linked heterodimer composed of proteolytically cleaved α and β chain. Each α and β chain has a calculated MW of 32.5 kDa (α chain) and 95.3 kDa (β chain Fc chimera). The protein migrates as 40-45 kDa (α chain) and 106-116 kDa (β chain Fc chimera) under reducing (R) condition (SDS-PAGE) due to glycosylation.

Endotoxin

Less than 1.0 EU per μ g by the LAL method.

Purity

>95% as determined by SDS-PAGE.

>90% as determined by SEC-MALS.

Formulation

Lyophilized from 0.22 μ m filtered solution in 50 mM Tris, 100 mM Glycine, pH7.5 with trehalose as protectant.

Contact us for customized product form or formulation.

Reconstitution

Please see Certificate of Analysis for specific instructions.

For best performance, we strongly recommend you to follow the reconstitution protocol provided in the CoA.

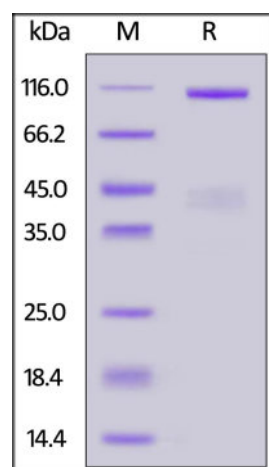
Storage

For long term storage, the product should be stored at lyophilized state at -20°C or lower.

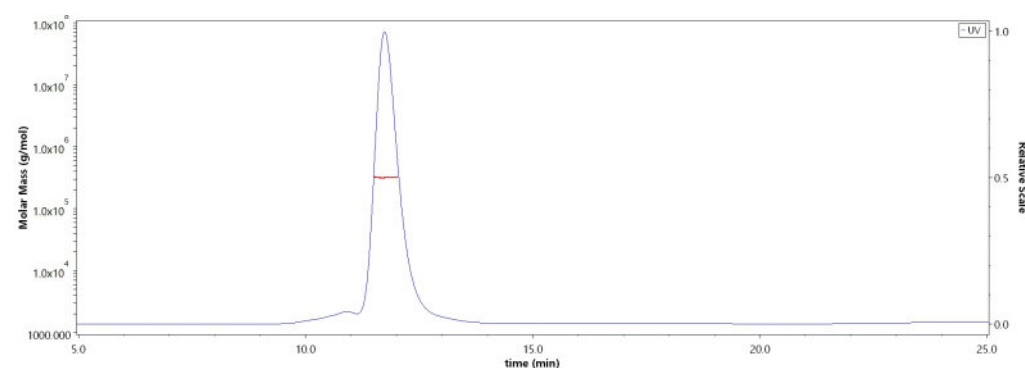
Please avoid repeated freeze-thaw cycles.

This product is stable after storage at:

- -20°C to -70°C for 12 months in lyophilized state;
- -70°C for 3 months under sterile conditions after reconstitution.

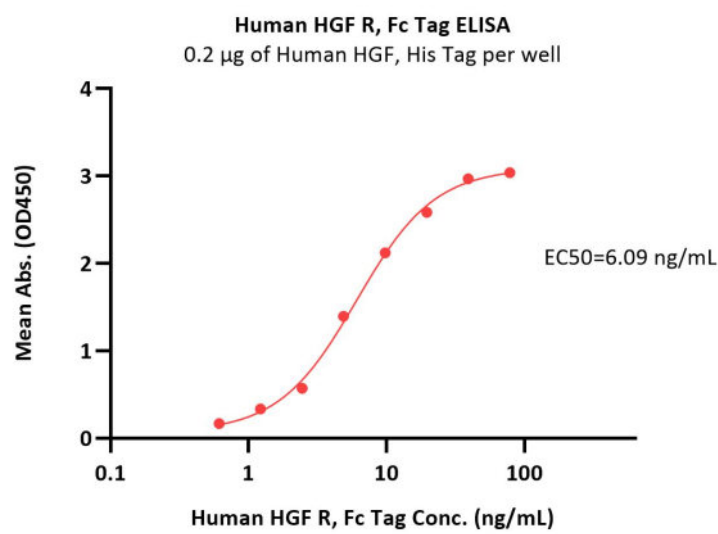
SDS-PAGE

Human HGF R, Fc Tag on SDS-PAGE under reducing (R) condition. The gel was stained with Coomassie Blue. The purity of the protein is greater than 95%.

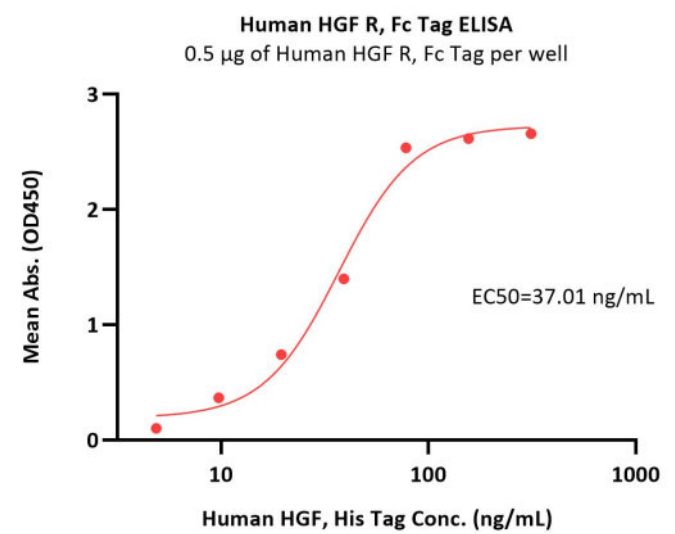
Bioactivity-ELISA**SEC-MALS**

The purity of Human HGF R, Fc Tag (Cat. No. MET-H5256) is more than 90% and the molecular weight of this protein is around 280-340 kDa verified by SEC-MALS.

[Report](#)



Immobilized Human HGF, His Tag (Cat. No. HGF-H52H3) at 2 µg/mL (100 µL/well) can bind Human HGF R, Fc Tag (Cat. No. MET-H5256) with a linear range of 0.6-20 ng/mL (QC tested).



Immobilized Human HGF R, Fc Tag (Cat. No. MET-H5256) at 5 µg/mL (100 µL/well) can bind Human HGF, His Tag (Cat. No. HGF-H52H3) with a linear range of 5-78 ng/mL (Routinely tested).

Background

Hepatocyte growth factor receptor (HGFR) is also known as mesenchymal-epithelial transition factor (MET), c-Met, and is a glycosylated receptor tyrosine kinase that plays a central role in epithelial morphogenesis and cancer development. HGFR protein possesses tyrosine-kinase activity. The primary single chain precursor protein is post-translationally cleaved to produce the alpha and beta subunits, which are disulfide linked to form the mature receptor. HGFR is normally expressed by cells of epithelial origin, while expression of HGF is restricted to cells of mesenchymal origin. Upon HGF stimulation, HGFR induces several biological responses that collectively give rise to a program known as invasive growth. Abnormal HGFR activation in cancer correlates with poor prognosis, where aberrantly active HGFR triggers tumor growth, formation of new blood vessels (angiogenesis) that supply the tumor with nutrients, and cancer spread to other organs (metastasis). HGFR is deregulated in many types of human malignancies, including cancers of kidney, liver, stomach, breast, and brain. Normally, only stem cells and progenitor cells express HGFR. However, cancer stem cells are thought to hijack the ability of normal stem cells to express HGFR, and thus become the cause of cancer persistence and spread to other sites in the body. Various mutations in the HGFR gene are associated with papillary renal carcinoma. HGFR mediates a complex program known as invasive growth. Activation of HGFR triggers mitogenesis, and morphogenesis.

Clinical and Translational Updates

Please contact us via TechSupport@acrobiosystems.com if you have any question on this product.