

**Synonym**

LY75,CD205,DEC-205,CLEC13B,Lymphocyte antigen 75,gp200-MR6

**Source**Human LY75, His Tag (LY5-H52H3) is expressed from human 293 cells (HEK293). It contains AA Ser 28 - Asp 1666 (Accession # [O60449-1](#)).

Predicted N-terminus: Ser 28

**Molecular Characterization**LY75(Ser 28 - Asp 1666)  
O60449-1

Poly-his

This protein carries a polyhistidine tag at the C-terminus.

The protein has a calculated MW of 190.7 kDa. The protein migrates as 200-230 kDa under reducing (R) condition (SDS-PAGE) due to glycosylation.

**Endotoxin**

Less than 1.0 EU per µg by the LAL method.

**Purity**

&gt;90% as determined by SDS-PAGE.

**Formulation**

Lyophilized from 0.22 µm filtered solution in PBS, pH7.4. Normally trehalose is added as protectant before lyophilization.

Contact us for customized product form or formulation.

**Reconstitution**

Please see Certificate of Analysis for specific instructions.

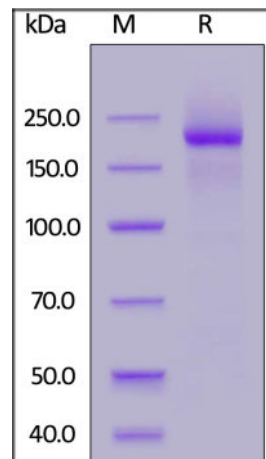
*For best performance, we strongly recommend you to follow the reconstitution protocol provided in the CoA.***Storage**

For long term storage, the product should be stored at lyophilized state at -20°C or lower.

*Please avoid repeated freeze-thaw cycles.*

This product is stable after storage at:

- -20°C to -70°C for 12 months in lyophilized state;
- -70°C for 3 months under sterile conditions after reconstitution.

**SDS-PAGE**

Human LY75, His Tag on SDS-PAGE under reducing (R) condition. The gel was stained overnight with Coomassie Blue. The purity of the protein is greater than 90%.

**Background**

lymphocyte antigen 75 (Ly 75, also known as CD205, CLEC13B, GP200-MR6 and DEC-205, is a type I transmembrane protein that is primarily expressed on dendritic cells and thymic epithelial cells. LY75 functions as an endocytic receptor for antigens. MEN1309/OBT076, the first antibody drug targeting CD205, has shown strong preclinical anti-tumor activity in lymphoma. After being verified as a single drug in vivo, the antibody-drug conjugate has a synergistic effect with the BCL2 inhibitor Venetoclax and the anti-cd20 monoclonal antibody rituximab.

**References**

Please contact us via [TechSupport@acrobiosystems.com](mailto:TechSupport@acrobiosystems.com) if you have any question on this product.