

**Synonym**

SLC39A6,LIV-1,ZIP6,Zinc transporter ZIP6,ZIP-6

**Source**

Human LIV-1, Fc Tag(LV1-H5254) is expressed from human 293 cells (HEK293). It contains AA Phe 29 - Trp 325 (Accession # [Q13433-1](#) ).

Predicted N-terminus: Phe 29

**Molecular Characterization**

LIV1(Phe 29 - Trp 325) Q13433-1	Fc(Pro 100 - Lys 330) P01857
------------------------------------	---------------------------------

This protein carries a human IgG1 Fc tag at the C-terminus.

The protein has a calculated MW of 60.1 kDa. The protein migrates as 70-100 kDa under reducing (R) condition (SDS-PAGE) due to glycosylation.

**Endotoxin**

Less than 1.0 EU per µg by the LAL method.

**Purity**

>95% as determined by SDS-PAGE.

>90% as determined by SEC-MALS.

**Formulation**

Lyophilized from 0.22 µm filtered solution in 50 mM Tris, 100 mM Glycine, 25 mM Arginine, 150 mM NaCl, pH7.5 with trehalose as protectant.

Contact us for customized product form or formulation.

**Reconstitution**

Please see Certificate of Analysis for specific instructions.

*For best performance, we strongly recommend you to follow the reconstitution protocol provided in the CoA.*

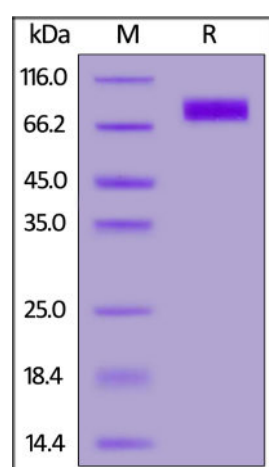
**Storage**

For long term storage, the product should be stored at lyophilized state at -20°C or lower.

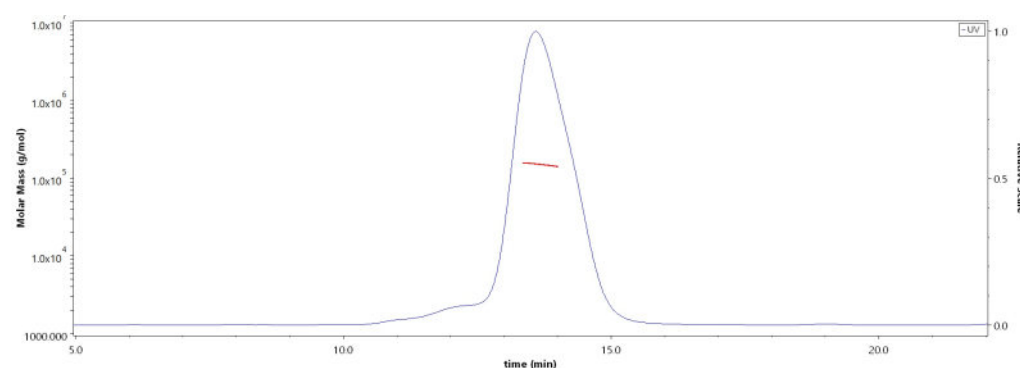
*Please avoid repeated freeze-thaw cycles.*

This product is stable after storage at:

- -20°C to -70°C for 12 months in lyophilized state;
- -70°C for 3 months under sterile conditions after reconstitution.

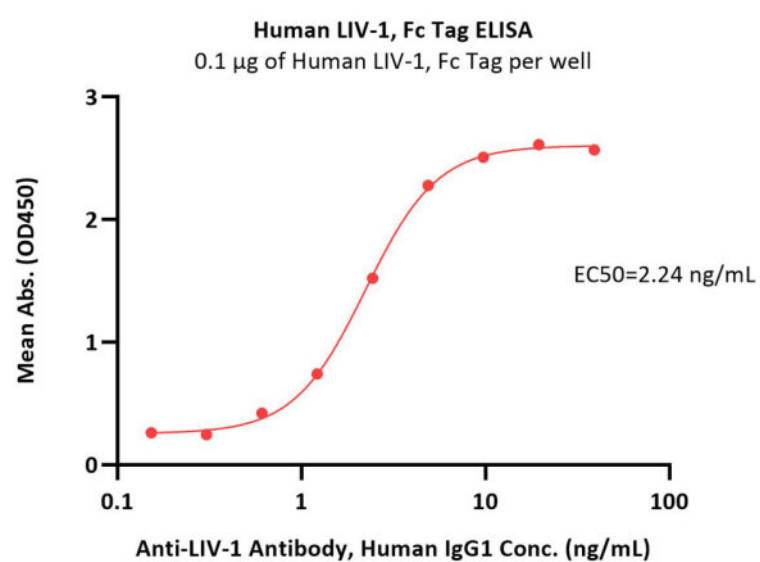
**SDS-PAGE**

Human LIV-1, Fc Tag on SDS-PAGE under reducing (R) condition. The gel was stained with Coomassie Blue. The purity of the protein is greater than 95%.

**Bioactivity-ELISA****SEC-MALS**

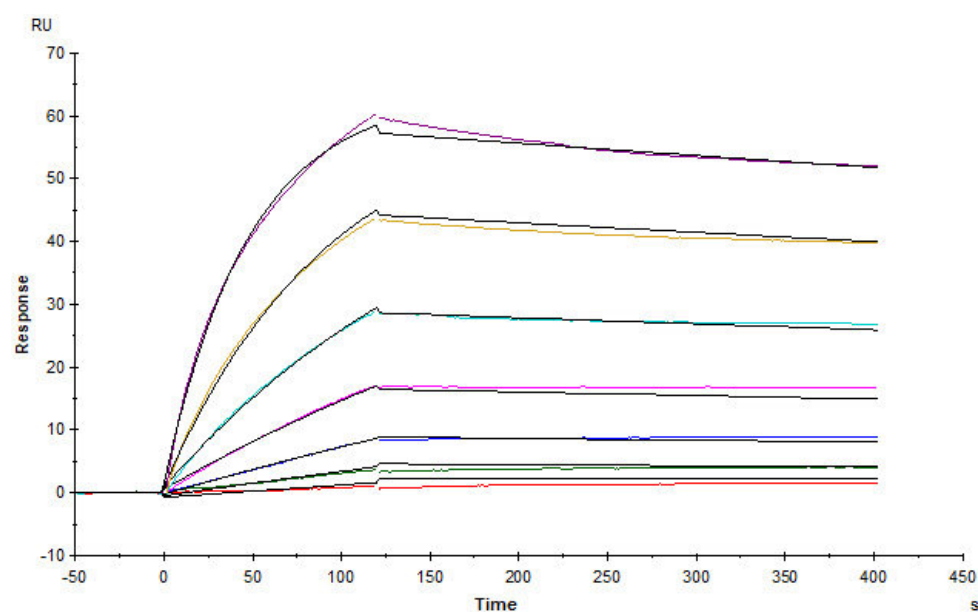
The purity of Human LIV-1, Fc Tag (Cat. No. LV1-H5254) is more than 90% and the molecular weight of this protein is around 130-160 kDa verified by SEC-MALS.

[Report](#)



Immobilized Human LIV-1, Fc Tag (Cat. No. LV1-H5254) at 1 µg/mL (100 µL/well) can bind Anti-LIV-1 antibody, Human IgG1 with a linear range of 0.3-5 ng/mL (QC tested).

### Bioactivity-SPR



Anti-LIV-1 mAb immobilized on CM5 can bind Human LIV-1, Fc Tag (Cat. No. LV1-H5254) with an affinity constant of 1.74 nM as determined in a SPR assay (Biacore T200) (Routinely tested).

### Background

LIV-1 is also known as SLC39A6, ZIP-6 and Zinc transporter ZIP6. May act as a zinc-influx transporter. Highly expressed in the breast, prostate, placenta, kidney, pituitary and corpus callosum. Weakly expressed in heart and intestine. Also highly expressed in cells derived from an adenocarcinoma of the cervix and lung carcinoma. Up-regulated by estrogen in breast cancer cells lines.

### Clinical and Translational Updates

Please contact us via [TechSupport@acrobiosystems.com](mailto:TechSupport@acrobiosystems.com) if you have any question on this product.