



### Synonym

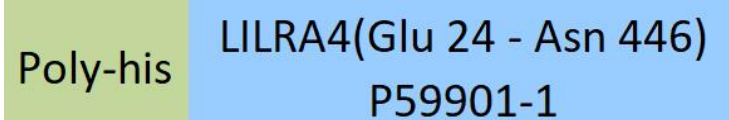
LILRA4,CD85g,ILT7,ILT-7

### Source

Human LILRA4, His Tag(LI4-H5243) is expressed from human 293 cells (HEK293). It contains AA Glu 24 - Asn 446 (Accession # [P59901-1](#) ).

Predicted N-terminus: His

### Molecular Characterization



This protein carries a polyhistidine tag at the N-terminus.

The protein has a calculated MW of 48.5 kDa. The protein migrates as 60-65 kDa when calibrated against [Star Ribbon Pre-stained Protein Marker](#) under reducing (R) condition (SDS-PAGE) due to glycosylation.

### Endotoxin

Less than 1.0 EU per µg by the LAL method.

### Purity

>95% as determined by SDS-PAGE.

>95% as determined by SEC-MALS.

### Formulation

Lyophilized from 0.22 µm filtered solution in PBS, pH7.4 with trehalose as protectant.

Contact us for customized product form or formulation.

### Reconstitution

Please see Certificate of Analysis for specific instructions.

*For best performance, we strongly recommend you to follow the reconstitution protocol provided in the CoA.*

### Storage

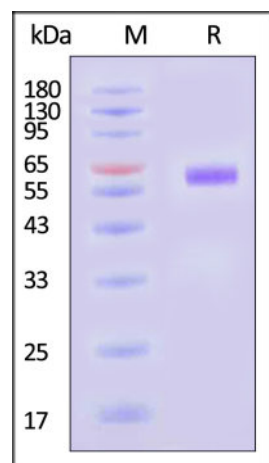
For long term storage, the product should be stored at lyophilized state at -20°C or lower.

*Please avoid repeated freeze-thaw cycles.*

This product is stable after storage at:

- -20°C to -70°C for 12 months in lyophilized state;
- -70°C for 3 months under sterile conditions after reconstitution.

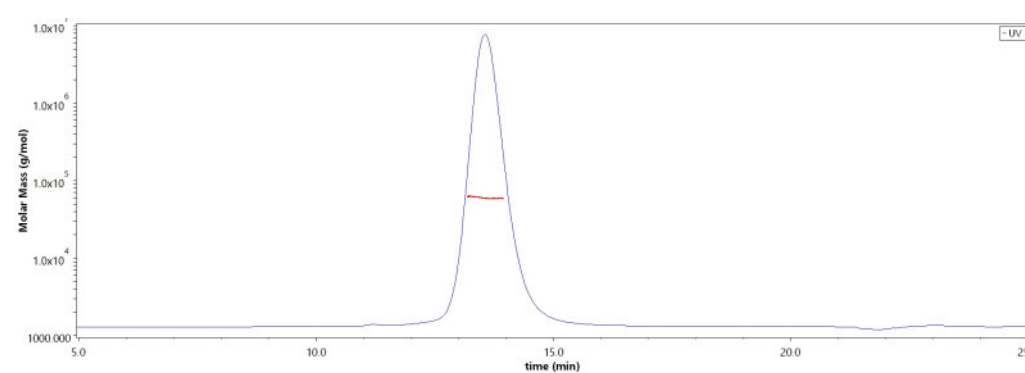
### SDS-PAGE



Human LILRA4, His Tag on SDS-PAGE under reducing (R) condition. The gel was stained with Coomassie Blue. The purity of the protein is greater than 95% (With [Star Ribbon Pre-stained Protein Marker](#)).

### Bioactivity-ELISA

### SEC-MALS

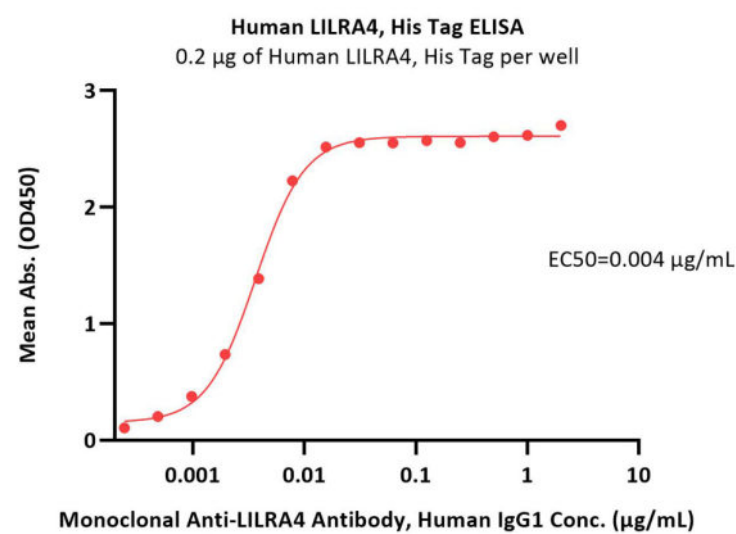


The purity of Human LILRA4, His Tag (Cat. No. LI4-H5243) is more than 95% and the molecular weight of this protein is around 55-74 kDa verified by SEC-MALS.

[Report](#)

Discounts, Gifts,  
and more!





Immobilized Human LILRA4, His Tag (Cat. No. LI4-H5243) at 2 µg/mL (100 µL/well) can bind Monoclonal Anti-LILRA4 Antibody, Human IgG1 with a linear range of 0.001-0.008 µg/mL (QC tested).

## Background

Leukocyte immunoglobulin-like receptor subfamily A member 4 (LILRA4/ILT7/CD85g) is a marker of plasmacytoid dendritic cells (pDCs), which are reported to be a major source of the abnormally high levels of IFN $\alpha$  associated with autoimmune diseases. Targeting LILRA4 with therapeutic antibodies to promote killing of these IFN $\alpha$ -producing pDCs is being investigated as a novel approach to alleviating the symptoms of autoimmune diseases. LILRA4 is an immunoglobulin-like protein preferentially expressed on the surface of human plasmacytoid dendritic cells (pDCs). It interacts with bone marrow stromal cell antigen 2 to control the Toll-like receptor (TLR) driven response by pDCs to viral infection. It may also be involved in modulating pDC-tumour interactions. pDCs are a source of the excess IFN $\alpha$  which drives autoimmune disease symptoms.

## Clinical and Translational Updates

Please contact us via [TechSupport@acrobiosystems.com](mailto:TechSupport@acrobiosystems.com) if you have any question on this product.

Discounts, Gifts,  
and more!

