



## Product Details

Laminin 111 is an extracellular matrix protein that has also been promoted for its ability to improve muscle regeneration and stabilize the plasma membrane in multiple forms of muscular dystrophy. Laminin 111 E8 is composed of the C-terminal end of Laminin alpha 1, beta 1 and gamma 1 chains.

## Key parameter

|                          |                  |
|--------------------------|------------------|
| <b>Purity (SDS PAGE)</b> | > 90%            |
| <b>Mycoplasma Test</b>   | Negative         |
| <b>Sterility Test</b>    | Negative         |
| <b>Endotoxin Test</b>    | < 0.01 EU per µg |

## Reconstitution

Please see Certificate of Analysis for specific instructions.

*For best performance, we strongly recommend you to follow the reconstitution protocol provided in the CoA.*

## Formulation

Lyophilized from 0.22 µm filtered solution in 50 mM Tris, 100 mM Glycine, 25 mM Arginine, 150 mM NaCl, pH7.5 with trehalose as protectant.

Contact us for customized product form or formulation.

## Storage

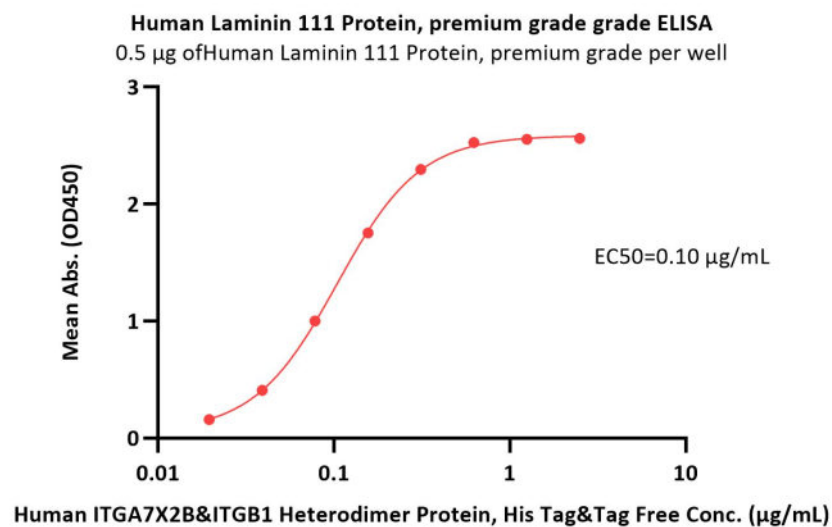
For long term storage, the product should be stored at lyophilized state at -20°C or lower.

*Please avoid repeated freeze-thaw cycles.*

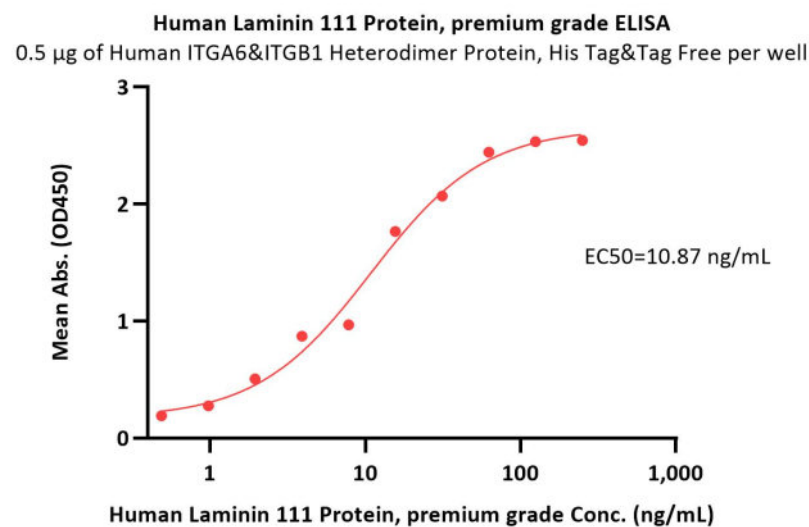
This product is stable after storage at:

- -20°C to -70°C for 24 months in lyophilized state;
- -70°C for 12 months under sterile conditions after reconstitution;
- 2-8°C for 3 months under sterile conditions after reconstitution.

## Bioactivity-ELISA



Immobilized Human Laminin 111 Protein, premium grade (Cat. No. LA1-H5269) at 5 µg/mL (100 µL/well) can bind Human ITGA7X2B&ITGB1



Immobilized Human ITGA6&ITGB1 Heterodimer Protein, His Tag&Tag Free (Cat. No. IT1-H52W7) at 5 µg/mL (100 µL/well) can bind Human Laminin 111

Discounts, Gifts,  
and more!



# Human Laminin 111 Protein, premium grade

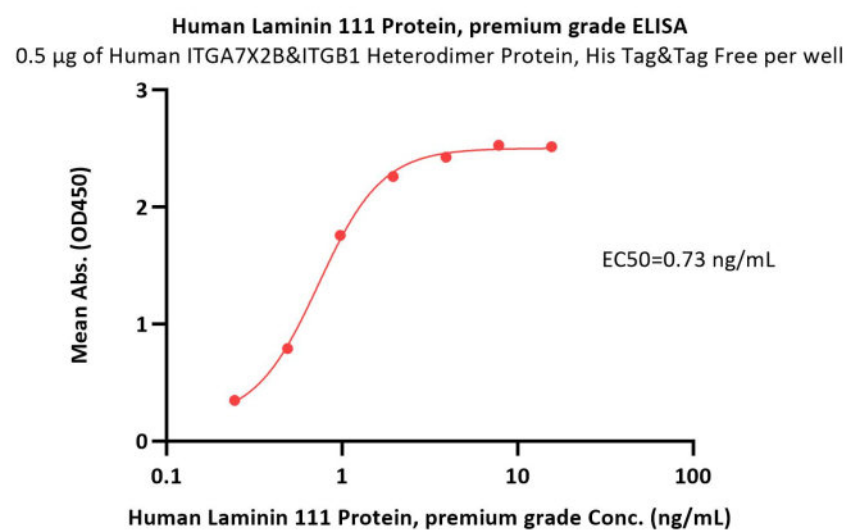
Catalog # LA1-H5269



BIOSYSTEMS  
**Acro**

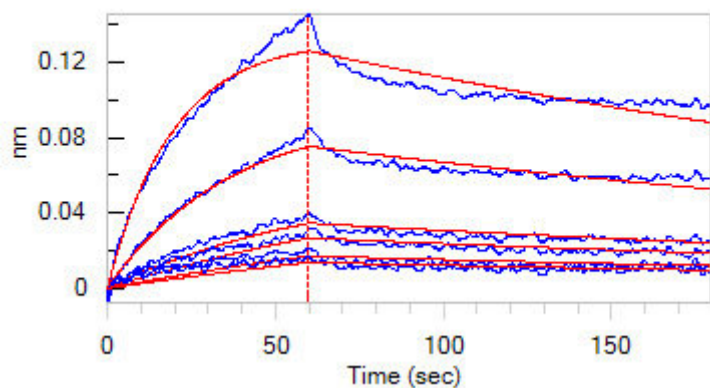
Heterodimer Protein, His Tag&Tag Free (Cat. No. IT1-H52W8) with a linear range of 0.02-0.313 µg/mL (Routinely tested).

Protein, premium grade (Cat. No. LA1-H5269) with a linear range of 0.5-31 ng/mL (Routinely tested).

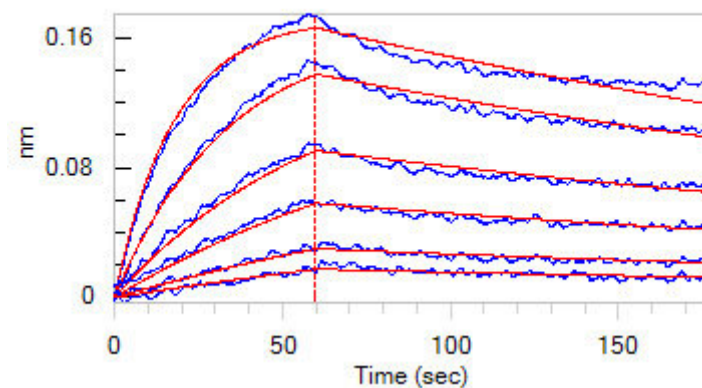


Immobilized Human ITGA7X2B&ITGB1 Heterodimer Protein, His Tag&Tag Free (Cat. No. IT1-H52W8) at 5 µg/mL (100 µL/well) can bind Human Laminin 111 Protein, premium grade (Cat. No. LA1-H5269) with a linear range of 0.2-2 ng/mL (Routinely tested).

## Bioactivity-BLI



Loaded Human Laminin 111 Protein, premium grade (Cat. No. LA1-H5269) on Protein A Biosensor, can bind Human ITGA7X2B&ITGB1 Heterodimer Protein, His Tag&Tag Free (Cat. No. IT1-H52W8) with an affinity constant of 12.4 nM as determined in BLI assay (ForteBio Octet Red96e) (QC tested).



Loaded Human ITGA7X2B&ITGB1 Heterodimer Protein, His Tag&Tag Free (Cat. No. IT1-H52W8) on NTA Biosensor, can bind Human Laminin 111 Protein, premium grade (Cat. No. LA1-H5269) with an affinity constant of 5.33 nM as determined in BLI assay (ForteBio Octet Red96e) (Routinely tested).

## Clinical and Translational Updates

Discounts, Gifts,  
and more!



➔ [www.acrobiosystems.com](http://www.acrobiosystems.com)

9/14/2024