

Synonym

LAMP1,CD107a

Source

Human LAMP1, His Tag (LA1-H5221) is expressed from human 293 cells (HEK293). It contains AA Ala 29 - Met 382 (Accession # [NP_005552](#)).

Predicted N-terminus: Ala 29

Molecular Characterization

LAMP1(Ala 29 - Met 382)
NP_005552 Poly-his

This protein carries a polyhistidine tag at the C-terminus.

The protein has a calculated MW of 39.2 kDa. The protein migrates as 55-95 kDa under reducing (R) condition (SDS-PAGE) due to different glycosylation.

Endotoxin

Less than 1.0 EU per µg by the LAL method.

Purity

>95% as determined by SDS-PAGE.

Formulation

Lyophilized from 0.22 µm filtered solution in PBS, pH7.4. Normally trehalose is added as protectant before lyophilization.

Contact us for customized product form or formulation.

Reconstitution

Please see Certificate of Analysis for specific instructions.

For best performance, we strongly recommend you to follow the reconstitution protocol provided in the CoA.

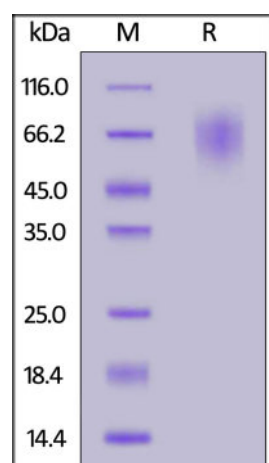
Storage

For long term storage, the product should be stored at lyophilized state at -20°C or lower.

Please avoid repeated freeze-thaw cycles.

This product is stable after storage at:

- -20°C to -70°C for 12 months in lyophilized state;
- -70°C for 3 months under sterile conditions after reconstitution.

SDS-PAGE

Human LAMP1, His Tag on SDS-PAGE under reducing (R) condition. The gel was stained overnight with Coomassie Blue. The purity of the protein is greater than 95%.

Background

Lysosomal-associated membrane protein 1 (LAMP1) is also known as CD107a (Cluster of Differentiation 107a). LAMP1 / CD107a belongs to the LAMP family. This glycoprotein provides selectins with carbohydrate ligands. It may also play a role in tumor cell metastasis. CD107a has also been shown to be a marker of degranulation on lymphocytes such as CD8+ and NK cells.

Clinical and Translational Updates

Please contact us via TechSupport@acrobiosystems.com if you have any question on this product.