

Synonym

Integrin alpha 1, ITGA1, CD49a, VLA-1

Source

Human Integrin alpha 1 Protein, His Tag(IN1-H52H3) is expressed from human 293 cells (HEK293). It contains AA Phe 29-Pro1141 (Accession # [P56199-1](#)).

Molecular Characterization

ITGA1(Phe 29-Pro1141) P56199-1	Poly-his
-----------------------------------	----------

This protein carries a polyhistidine tag at the C-terminus

The protein has a calculated MW of 130.2 kDa. The protein migrates as >180 kDa when calibrated against [Star Ribbon Pre-stained Protein Marker](#) under reducing (R) condition (SDS-PAGE) due to glycosylation.

Endotoxin

Less than 1.0 EU per µg by the LAL method.

Purity

>90% as determined by SDS-PAGE.

Formulation

Lyophilized from 0.22 µm filtered solution in 50mM Tris, 150mM NaCl, pH7.5 with trehalose as protectant.

Contact us for customized product form or formulation.

Reconstitution

Please see Certificate of Analysis for specific instructions.

For best performance, we strongly recommend you to follow the reconstitution protocol provided in the CoA.

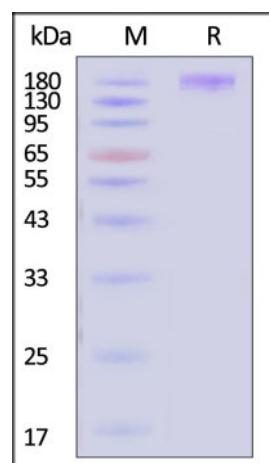
Storage

For long term storage, the product should be stored at lyophilized state at -20°C or lower.

Please avoid repeated freeze-thaw cycles.

This product is stable after storage at:

- -20°C to -70°C for 12 months in lyophilized state;
- -70°C for 3 months under sterile conditions after reconstitution.

SDS-PAGE

Human Integrin alpha 1 Protein, His Tag on SDS-PAGE under reducing (R) condition. The gel was stained with Coomassie Blue. The purity of the protein is greater than 90% (With [Star Ribbon Pre-stained Protein Marker](#)).

Background

Integrins are heterodimeric proteins made up of alpha and beta subunits. At least 18 alpha and 8 beta subunits have been described in mammals. Integrin family members are membrane receptors involved in cell adhesion and recognition in a variety of processes including embryogenesis, hemostasis, tissue repair, immune response and metastatic diffusion of tumor cells. This gene encodes a beta subunit. Multiple alternatively spliced transcript variants which encode different protein isoforms have been found for this gene. [provided by RefSeq, Jul 2008]

Clinical and Translational Updates

Human Integrin alpha 1 Protein, His Tag

Catalog # IN1-H52H3



Please contact us via TechSupport@acrobiosystems.com if you have any question on this product.