



Synonym

IL1B,IL-1BETA,IL1F2,IL-1β

Source

Mouse IL-1 beta, His Tag(ILB-M51H3) is expressed from E. coli cells. It contains AA Val 118 - Ser 269 (Accession # [P10749-1](#)).

Predicted N-terminus: Met

Molecular Characterization

Poly-his IL-1 beta(Val 118 - Ser 269)
P10749-1

This protein carries a polyhistidine tag at the N-terminus.

The protein has a calculated MW of 19.3 kDa. The protein migrates as 19-20 kDa when calibrated against [Star Ribbon Pre-stained Protein Marker](#) under reducing (R) condition (SDS-PAGE).

Endotoxin

Less than 1.0 EU per μg by the LAL method.

Purity

>95% as determined by SDS-PAGE.

Formulation

Lyophilized from 0.22 μm filtered solution in PBS, pH7.4 with trehalose as protectant.

Contact us for customized product form or formulation.

Reconstitution

Please see Certificate of Analysis for specific instructions.

For best performance, we strongly recommend you to follow the reconstitution protocol provided in the CoA.

Storage

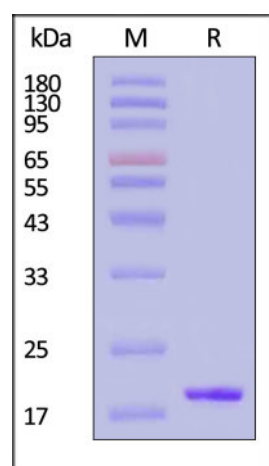
For long term storage, the product should be stored at lyophilized state at -20°C or lower.

Please avoid repeated freeze-thaw cycles.

This product is stable after storage at:

- -20°C to -70°C for 12 months in lyophilized state;
- -70°C for 3 months under sterile conditions after reconstitution.

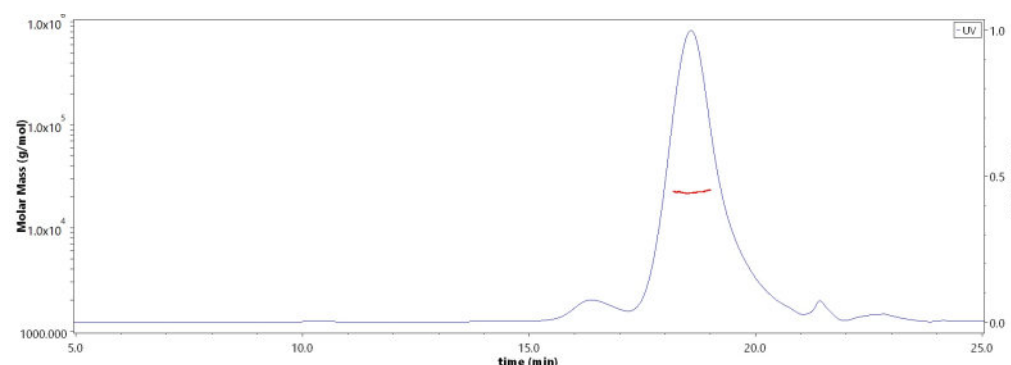
SDS-PAGE



Mouse IL-1 beta, His Tag on SDS-PAGE under reducing (R) condition. The gel was stained with Coomassie Blue. The purity of the protein is greater than 95% (With [Star Ribbon Pre-stained Protein Marker](#)).

Bioactivity-ELISA

SEC-MALS

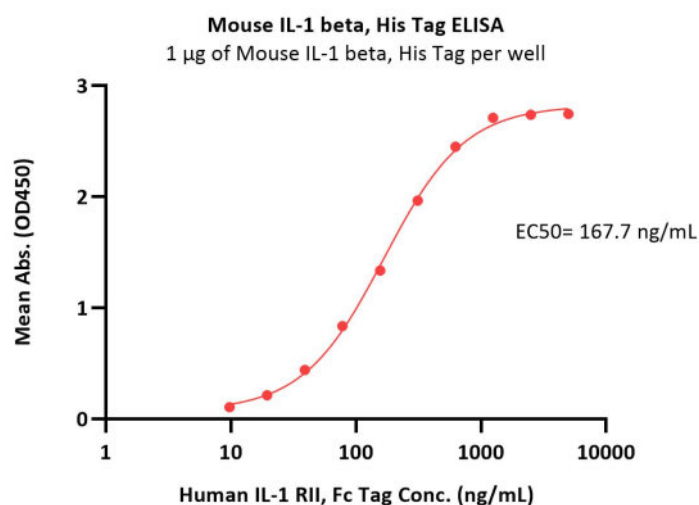


The purity of Mouse IL-1 beta, His Tag (Cat. No. ILB-M51H3) is more than 85% and the molecular weight of this protein is around 20-25 kDa verified by SEC-MALS.

[Report](#)

Discounts, Gifts,
and more!





Immobilized Mouse IL-1 beta, His Tag (Cat. No. ILB-M51H3) at 10 µg/mL (100 µL/well) can bind Human IL-1 RII, Fc Tag (Cat. No. IL2-H4256) with a linear range of 20-313 ng/mL (QC tested).

Background

Interleukin-1 beta (IL-1 β) is also known as catabolin, is a cytokine protein that in humans is encoded by the IL1B gene. IL-1 β precursor is cleaved by caspase 1 (interleukin 1 beta convertase). Cytosolic thiol protease cleaves the product to form mature IL-1 beta.

IL1 β are structurally related polypeptides that share approximately 21% amino acid (aa) identity in human. Both proteins are produced by a wide variety of cells in response to inflammatory agents, infections, or microbial endotoxins. While IL1 α and IL1 β are regulated independently, they bind to the same receptor and exert identical biological effects.

IL-1 β is a member of the interleukin 1 cytokine family. This cytokine is produced by activated macrophages as a proprotein, which is proteolytically processed to its active form by caspase 1 (CASP1/ICE). This cytokine is an important mediator of the inflammatory response, and is involved in a variety of cellular activities, including cell proliferation, differentiation, and apoptosis. The induction of cyclooxygenase-2 (PTGS2/COX2) by this cytokine in the central nervous system (CNS) is found to contribute to inflammatory pain hypersensitivity. This gene and eight other interleukin 1 family genes form a cytokine gene cluster on chromosome 2.

Clinical and Translational Updates

Discounts, Gifts,
and more!

