



### Synonym

Interleukin-20 receptor subunit alpha, IL-20 receptor subunit alpha, IL-20R-alpha, IL-20RA, Cytokine receptor class-II member 8, Cytokine receptor family 2 member 8, CRF2-8, IL-20R1, ZcytoR7

### Source

Human IL-20 R alpha, Fc Tag (ILA-H525d) is expressed from human 293 cells (HEK293). It contains AA Val 30 - Lys 250 (Accession # [Q9UHF4-1](#)).

Predicted N-terminus: Val 30

### Molecular Characterization

IL-20RA (Val 30 - Lys 250) Q9UHF4-1	Fc (Pro 100 - Lys 330) P01857
--	----------------------------------

This protein carries a human IgG1 Fc tag at the C-terminus.

The protein has a calculated MW of 51.7 kDa. The protein migrates as 65-70 kDa under reducing (R) condition (SDS-PAGE) due to glycosylation.

### Endotoxin

Less than 1.0 EU per µg by the LAL method.

### Purity

>95% as determined by SDS-PAGE.

>90% as determined by SEC-MALS.

### Formulation

Lyophilized from 0.22 µm filtered solution in PBS, pH7.4 with trehalose as protectant.

Contact us for customized product form or formulation.

### Reconstitution

Please see Certificate of Analysis for specific instructions.

*For best performance, we strongly recommend you to follow the reconstitution protocol provided in the CoA.*

### Storage

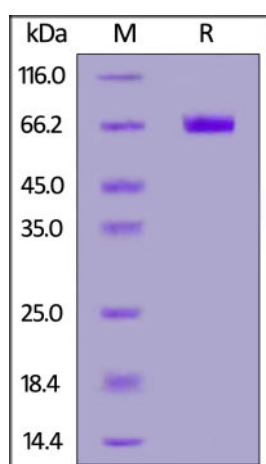
For long term storage, the product should be stored at lyophilized state at -20°C or lower.

*Please avoid repeated freeze-thaw cycles.*

This product is stable after storage at:

- -20°C to -70°C for 12 months in lyophilized state;
- -70°C for 3 months under sterile conditions after reconstitution.

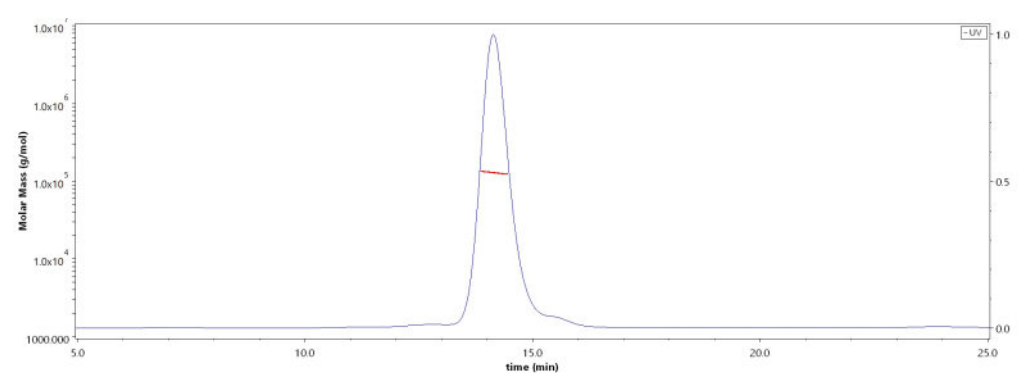
### SDS-PAGE



Human IL-20 R alpha, Fc Tag on SDS-PAGE under reducing (R) condition. The gel was stained with Coomassie Blue. The purity of the protein is greater than 95%.

### Bioactivity-SPR

### SEC-MALS

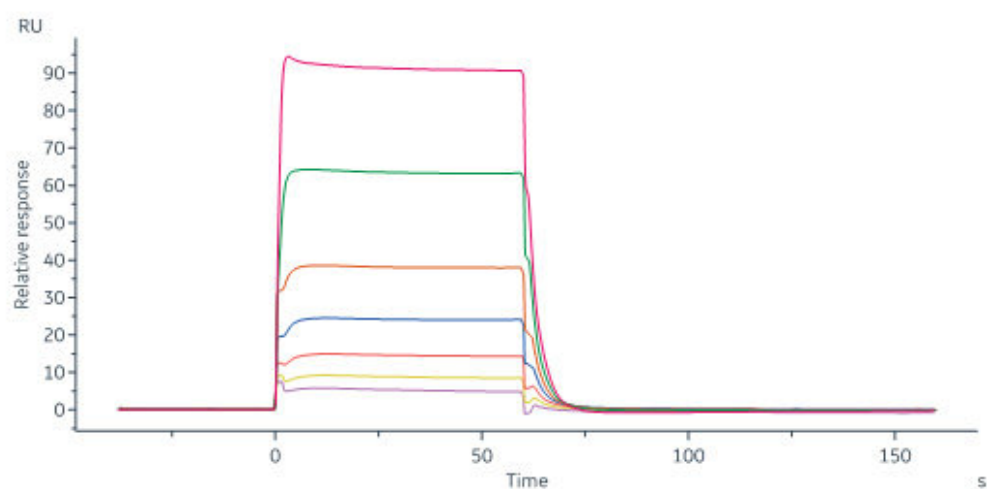


The purity of Human IL-20 R alpha, Fc Tag (Cat. No. ILA-H525d) is more than 90% and the molecular weight of this protein is around 114-140 kDa verified by SEC-MALS.

[Report](#)

Discounts, Gifts,  
and more!





Human IL-20, His Tag (Cat. No. IL0-H5243) immobilized on CM5 Chip can bind Human IL-20 R alpha, Fc Tag (Cat. No. ILA-H525d) with an affinity constant of 4.42  $\mu$ M as determined in a SPR assay (Biacore 8K) (QC tested).

## Background

The IL-20 receptor alpha subunit forms a functional heterodimer with the IL-20 beta subunit, and transduces ligand-binding at least in part through STAT3 activation. The IL20RA/IL20RB dimer is a receptor for IL19, IL20 and IL24. The IL20RA/IL10RB dimer is a receptor for IL26.

## Clinical and Translational Updates

Discounts, Gifts,  
and more!

