



## Synonym

IL-31 RA,IL-31RA,hGLM-R,CRL3,GPL,ZcytoR17,GLM-R,IL-31R-alpha,Gp130-like receptor

## Source

Human IL-31 RA, Fc Tag(ILA-H5256) is expressed from human 293 cells (HEK293). It contains AA Ala 20 - Glu 519 (Accession # [Q8NI17-1](#)). Predicted N-terminus: Ala 20

## Molecular Characterization

IL-31 RA(Ala 20 - Glu 519) Q8NI17-1	Fc(Pro 100 - Lys 330) P01857
--	---------------------------------

This protein carries a human IgG1 Fc tag at the C-terminus.

The protein has a calculated MW of 83.5 kDa. The protein migrates as 105-115 kDa when calibrated against [Star Ribbon Pre-stained Protein Marker](#) under reducing (R) condition (SDS-PAGE) due to glycosylation.

## Endotoxin

Less than 1.0 EU per µg by the LAL method.

## Purity

>95% as determined by SDS-PAGE.

## Formulation

Lyophilized from 0.22 µm filtered solution in Tris with Glycine, Arginine and NaCl, pH7.5 with trehalose as protectant.

Contact us for customized product form or formulation.

## Reconstitution

Please see Certificate of Analysis for specific instructions.

*For best performance, we strongly recommend you to follow the reconstitution protocol provided in the CoA.*

## Storage

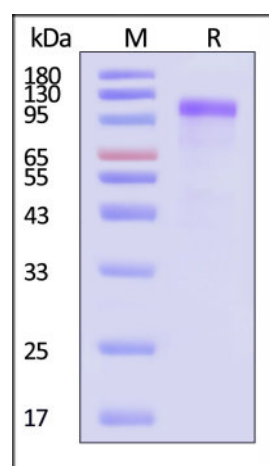
For long term storage, the product should be stored at lyophilized state at -20°C or lower.

*Please avoid repeated freeze-thaw cycles.*

This product is stable after storage at:

- -20°C to -70°C for 12 months in lyophilized state;
- -70°C for 3 months under sterile conditions after reconstitution.

## SDS-PAGE

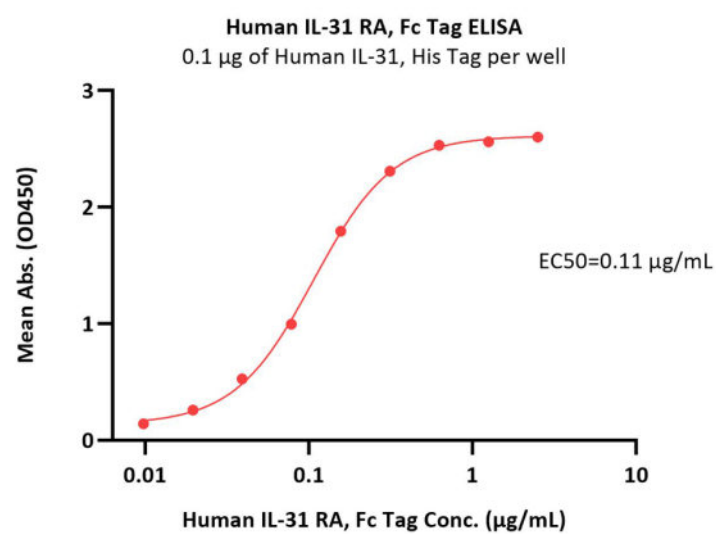


Human IL-31 RA, Fc Tag on SDS-PAGE under reducing (R) condition. The gel was stained with Coomassie Blue. The purity of the protein is greater than 95% (With [Star Ribbon Pre-stained Protein Marker](#)).

## Bioactivity-ELISA

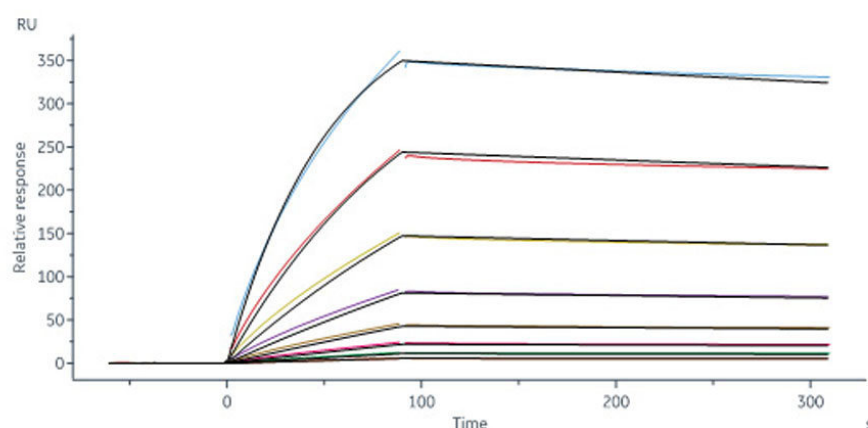
Discounts, Gifts,  
and more!





Immobilized Human IL-31, His Tag (Cat. No. IL1-H5247) at 1 µg/mL (100 µL/well) can bind Human IL-31 RA, Fc Tag (Cat. No. ILA-H5256) with a linear range of 0.01-0.313 µg/mL (QC tested).

## Bioactivity-SPR



Human IL-31, His Tag (Cat. No. IL1-H5247) capture on NTA-Series S sensor chip can bind Human IL-31 RA, Fc Tag (Cat. No. ILA-H5256) with an affinity constant of 37.1 nM as determined in a SPR assay (Biacore 8K) (Routinely tested).

## Background

Interleukin-31 receptor subunit alpha is a protein that in humans is encoded by the IL31RA gene, also known as IL-31 receptor subunit alpha, IL-31RA, GLM-R, Gp130-like receptor, CRL3, GPL. Oncostatin M receptor (OSMR) and IL31RA form the heterodimeric receptor through which IL31 signals. IL31RA is a strong activator of STAT3 and STAT5, whereas STAT1 is only marginally tyrosine-phosphorylated. Additionally, demonstrate Jak1 binding to GPL and its activation in heteromeric complexes with the OSMRbeta but also in a homomeric receptor complex.

## Clinical and Translational Updates

Discounts, Gifts,  
and more!

