

Synonym

IgG2B,IgG2b Fc

Source

Llama IgG2b Fc, Tag Free (IGB-L5204) is expressed from human 293 cells (HEK293). It contains AA Glu 1-Ser 243 (Accession # [AAAX73259.1](#)).

Predicted N-terminus: Glu 1

Molecular Characterization

IgG2b Fc(Glu 1-Ser 243)
AAX73259.1

This protein carries no "tag".

The protein has a calculated MW of 27.3 kDa. The protein migrates as 35-40 kDa under reducing (R) condition (SDS-PAGE) due to glycosylation.

Endotoxin

Less than 1.0 EU per μg by the LAL method.

Purity

>90% as determined by SDS-PAGE.

>95% as determined by SEC-MALS.

Formulation

Lyophilized from 0.22 μm filtered solution in Tris with Glycine, Arginine and NaCl, pH7.5. Normally trehalose is added as protectant before lyophilization.

Contact us for customized product form or formulation.

Reconstitution

Please see Certificate of Analysis for specific instructions.

For best performance, we strongly recommend you to follow the reconstitution protocol provided in the CoA.

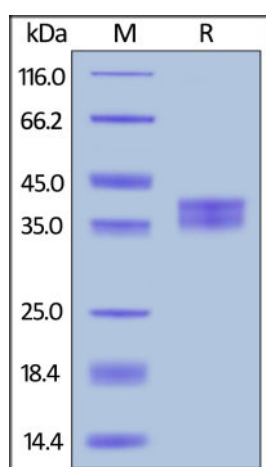
Storage

For long term storage, the product should be stored at lyophilized state at -20°C or lower.

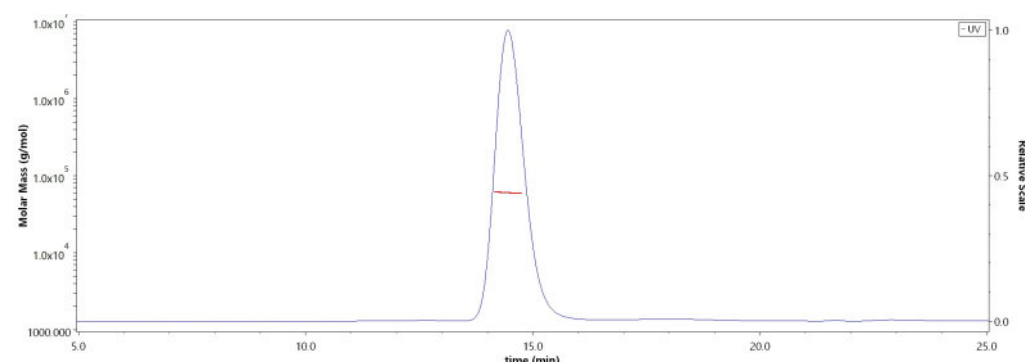
Please avoid repeated freeze-thaw cycles.

This product is stable after storage at:

- -20°C to -70°C for 12 months in lyophilized state;
- -70°C for 3 months under sterile conditions after reconstitution.

SDS-PAGE

Llama IgG2b Fc, Tag Free on SDS-PAGE under reducing (R) condition. The gel was stained overnight with Coomassie Blue. The purity of the protein is greater than 90%.

SEC-MALS

The purity of Llama IgG2b Fc, Tag Free (Cat. No. IGB-L5204) was more than 95% and the molecular weight of this protein is around 53-65 kDa verified by SEC-MALS.

[Report](#)

Background

Immunoglobulin G2 (IgG2) is a member of many immunoglobulin G developed and secreted by effective B cells. In wake of cutting by pepsin, IgG is divided into two F(ab)s with one antigen binding site and a high conserved Fc segment. The Fc segment bears a highly conserved N-glycosylation site. There are two members of

IgG2: IgG2a and IgG2b. It was found that IgG2a was superior to IgG1 in activating complement. The glycosylation of the circulating immunoglobulin- γ (IgG) antibody molecules changes in rheumatoid arthritis. Ig gamma-2 chain Fc region contains two constant regions of IgG2 H chain (CH2, CH3).

Clinical and Translational Updates

Please contact us via TechSupport@acrobiosystems.com if you have any question on this product.