

Synonym

Ig gamma-3 chain C region,IgG,IgG3

Source

Human IgG3 Fc, Tag Free (IG3-H5200) is expressed from human 293 cells (HEK293). It contains AA Glu 99 - Lys 377 (Accession # [P01860](#)).

Predicted N-terminus: Glu 99

Molecular Characterization

IgG3 Fc(Glu 99 - Lys 377)
P01860

This protein carries no "tag".

The protein has a calculated MW of 31.2 kDa. The protein migrates as 35-42 kDa under reducing (R) condition (SDS-PAGE) due to glycosylation.

Endotoxin

Less than 1.0 EU per µg by the LAL method.

Purity

>95% as determined by SDS-PAGE.

>90% as determined by SEC-MALS.

Formulation

Lyophilized from 0.22 µm filtered solution in Tris with Glycine, Arginine and NaCl, pH7.5. Normally trehalose is added as protectant before lyophilization.

Contact us for customized product form or formulation.

Reconstitution

Please see Certificate of Analysis for specific instructions.

For best performance, we strongly recommend you to follow the reconstitution protocol provided in the CoA.

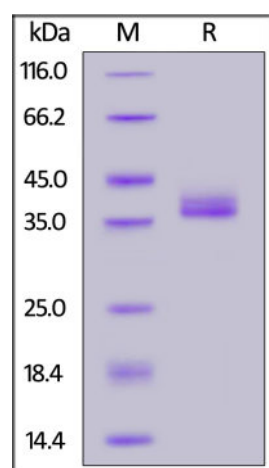
Storage

For long term storage, the product should be stored at lyophilized state at -20°C or lower.

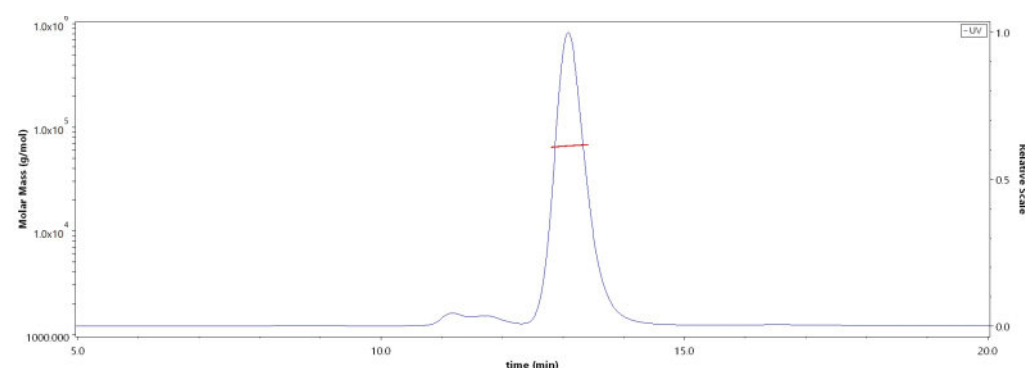
Please avoid repeated freeze-thaw cycles.

This product is stable after storage at:

- -20°C to -70°C for 12 months in lyophilized state;
- -70°C for 3 months under sterile conditions after reconstitution.

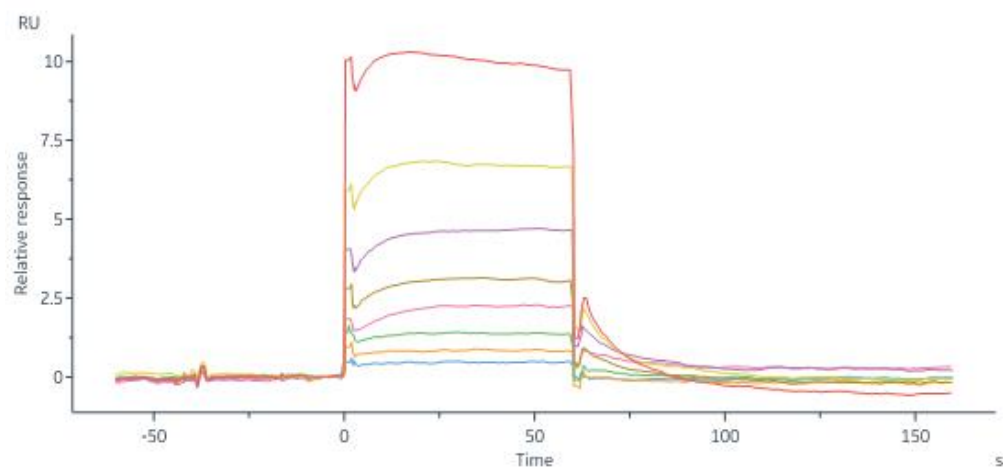
SDS-PAGE

Human IgG3 Fc, Tag Free on SDS-PAGE under reducing (R) condition. The gel was stained overnight with Coomassie Blue. The purity of the protein is greater than 95%.

Bioactivity-SPR**SEC-MALS**

The purity of Human IgG3 Fc, Tag Free (Cat. No. IG3-H5200) was more than 90% and the molecular weight of this protein is around 58-71 kDa verified by SEC-MALS.

[Report](#)



Human FCGRT&B2M Heterodimer Protein, His Tag (Cat. No. FCN-H52W7) captured on CM5 Chip via anti-His antibody can bind Human IgG3 Fc, Tag Free (Cat. No. IG3-H5200) with an affinity constant of 2.82 μ M as determined in SPR assay (Biacore 8K) (QC tested).

Background

Immunoglobulin G3 (IgG3) is a member of many immunoglobulin G developed and secreted by effective B cells. In wake of cutting by pepsin, IgG is divided into two F(ab)s with one antigen binding site and a high conserved Fc segment. The Fc segment bears a highly conserved N-glycosylation site. Ig gamma-3 chain C region (IgG3-Fc / IGHG3) contains two constant regions of IgG3 H chain (CH2, CH3).

Clinical and Translational Updates

Please contact us via TechSupport@acrobiosystems.com if you have any question on this product.