



Source

Biotinylated Monoclonal IFN-gamma Antibody, Human IgG1 (8C5F8) is a chimeric monoclonal antibody recombinantly expressed from HEK293, which combines the variable region of a mouse monoclonal antibody with Human constant domain.

Clone

8C5F8

Isotype

Human IgG1 | Human Kappa

Conjugate

Biotin

Antibody Type

Recombinant Monoclonal

Reactivity

Human

Immunogen

Recombinant Human IFN- γ Protein is expressed from human 293T cells.

Specificity

This product is a specific antibody specifically reacts with IFN-gamma.

Application

Application	Recommended Usage
ELISA	0.24-1000 ng/mL

Purity

>90% as determined by SDS-PAGE.

Purification

Protein A purified/ Protein G purified

Formulation

Supplied as 0.2 μ m filtered solution in PBS, pH7.4 with trehalose as protectant.

Contact us for customized product form or formulation.

Shipping

This product is supplied and shipped with dry ice, please inquire the shipping cost.

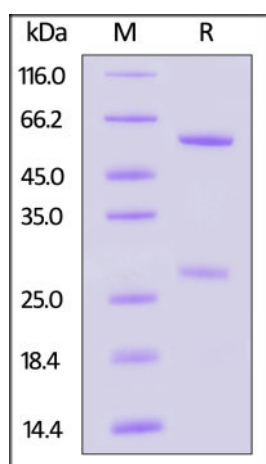
Storage

Please avoid repeated freeze-thaw cycles.

This product is stable after storage at:

- The product MUST be stored at -70°C or lower upon receipt;
- -70°C for 3 months under sterile conditions.

SDS-PAGE



Discounts, Gifts,
and more!



Biotinylated Monoclonal IFN-gamma Antibody, Human IgG1 (8C5F8)

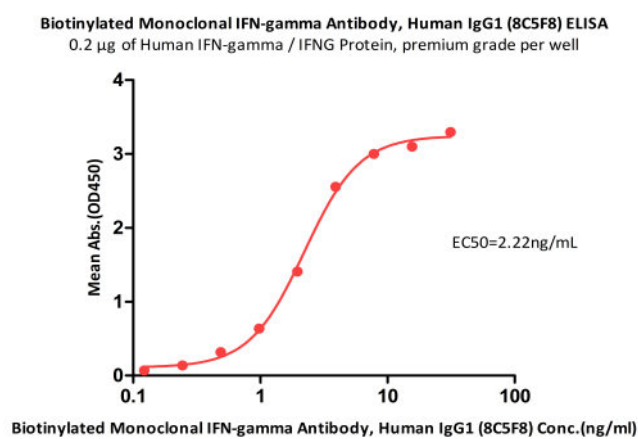
Catalog # IFN-BLM412



BIOSYSTEMS
Acro

Biotinylated Monoclonal IFN-gamma Antibody, Human IgG1 (8C5F8) on SDS-PAGE under reducing (R) condition. The gel was stained with Coomassie Blue. The purity of the protein is greater than 90%.

Bioactivity-ELISA



Immobilized Human IFN-gamma / IFNG Protein, premium grade (Cat. No. IFG-H4211) can bind Biotinylated Monoclonal IFN-gamma Antibody, Human IgG1 (8C5F8) (Cat. No. IFN-BLM412) with a linear range of 0.24-3.91ng/mL (QC tested).

Background

IFN γ is secreted by innate-like lymphocytes, including group 1 innate lymphoid cells (ILC1s), and by adaptive lymphocytes, including T helper 1 (TH1) cells and cytotoxic T lymphocytes (CTLs), in response to cytokine and antigen stimulation. It plays important roles in tissue homeostasis, immune and inflammatory responses and tumour immunosurveillance. Anti-IFN γ antibody, is a monoclonal antibody used to detected IFN γ , which is a recombinant IgG1 kappa, humanized monoclonal antibody that selectively binds with Human IFN-gamma protein.

Clinical and Translational Updates

Discounts, Gifts,
and more!



www.acrobiosystems.com

9/14/2024