



**Product Details**

This product is derived from Streptococcus pyogenes and expressed in E. coli, it is an IgG-specific cysteine protease that digests antibodies at a single amino acid site below the hinge, generating homogenous F(ab')<sub>2</sub> and Fc fragments.

**Application**

IdeS cleaves IgG to produce F(ab')<sub>2</sub> and Fc fragments at specific site.

**Unit Definition**

One unit digests ≥ 95% of 1 μg human IgG when incubated in 10 mM sodium phosphate, 137 mM NaCl, 2.7 mM KCl, pH7.4 at 37°C for 30min.

**Purity**

>95% as determined by SDS-PAGE.

**Enzyme Activity**

>70 U/μL

**Endotoxin**

Less than 1.0 EU per μg by the LAL method.

**Formulation**

Lyophilized from 0.22 μm filtered solution in 50 mM Tris, 150 mM NaCl, PH7.5 with trehalose as protectant.

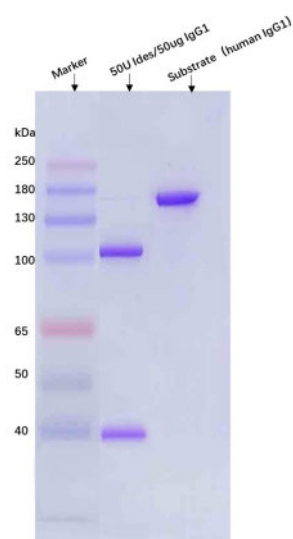
Contact us for customized product form or formulation.

**Storage**

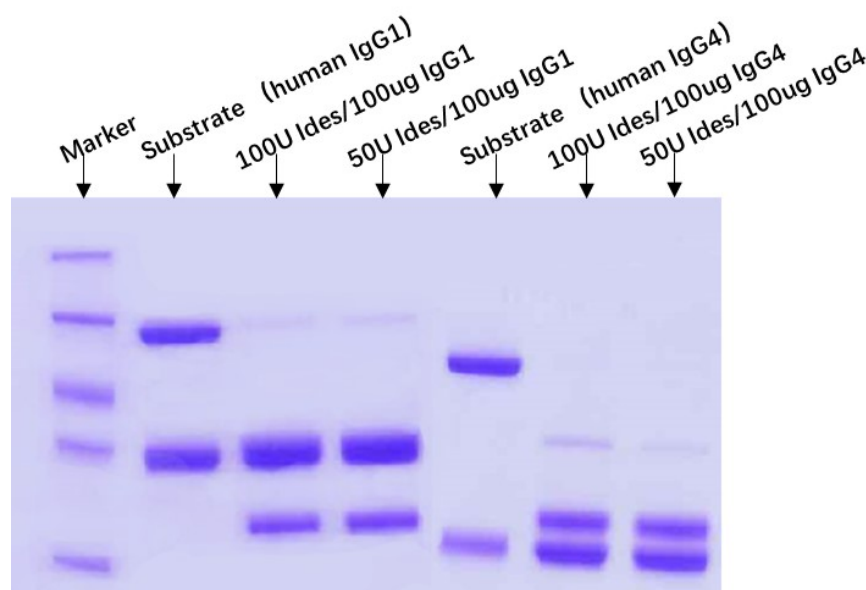
This product is stable after storage at:

- -20°C to -70°C for 12 months in lyophilized state;
- -70°C for 3 months under sterile conditions after reconstitution.

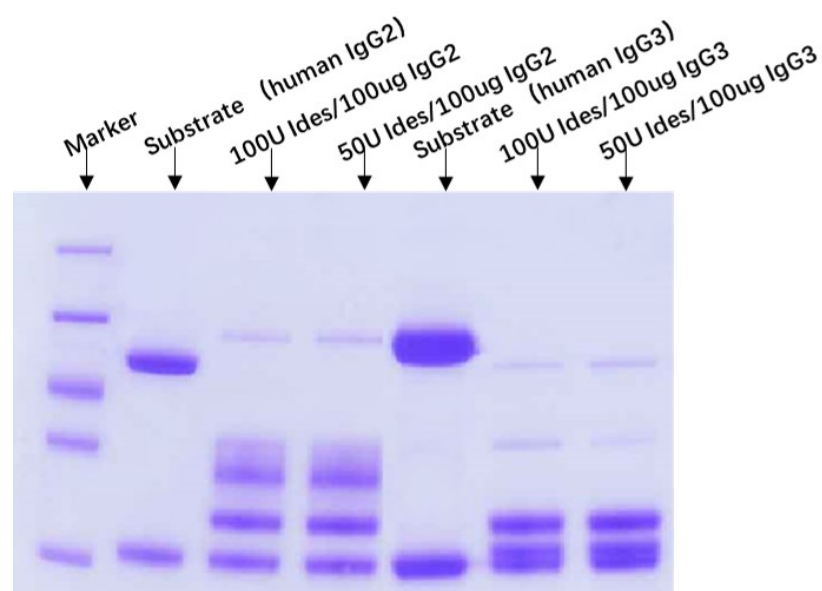
**Bioactivity**



Bioactivity of IdeS is confirmed by the cleavage of Human IgG as analyzed by SDS-PAGE (QC tested).



50/100unit Ides digests ≥ 95% of 100 μg human IgG when incubated in PBS pH 7.4 at 37°C for 30min (Routinely tested).



Discounts, Gifts,  
and more!



## IdeS (70U/μl)

Catalog # IDS-S5143



BIOSYSTEMS  
**Acro**

50/100unit IdeS digests  $\geq 95\%$  of 100  $\mu\text{g}$  human IgG when incubated in PBS  
pH 7.4 at 37°C for 30min (Routinely tested).

### Clinical and Translational Updates

Discounts, Gifts,  
and more!



[www.acrobiosystems.com](http://www.acrobiosystems.com)

5/31/2024