



## Background

The Claudin-18.2 (CLDN 18.2) protein, an isoform of Claudin 18, a member of the tight junction protein family, is a highly selective biomarker with limited expression in normal tissues and often abnormal expression during the occurrence and development of various primary malignant tumors, such as gastric cancer/gastroesophageal junction (GC/GEJ) cancer, breast cancer, colon cancer, liver cancer, head and neck cancer, bronchial cancer and non-small-cell lung cancer. Claudin-18.2 participates in the proliferation, differentiation and migration of tumor cells. Recent studies have identified Claudin-18.2 expression as a potential specific marker for the diagnosis and treatment of these tumors.

## Host Species

Mouse

## Clone

3B10

## Application

IHC

## Property

1: 1000

## State

Liquid

## Positive Control

Human Stomach Tissues

## Clonality

Monoclonal

## Synonym

Claudin18.2, CLDN 18.2

## Research Field

Cancer Drug Targets

## Source

Mouse

## Isotype

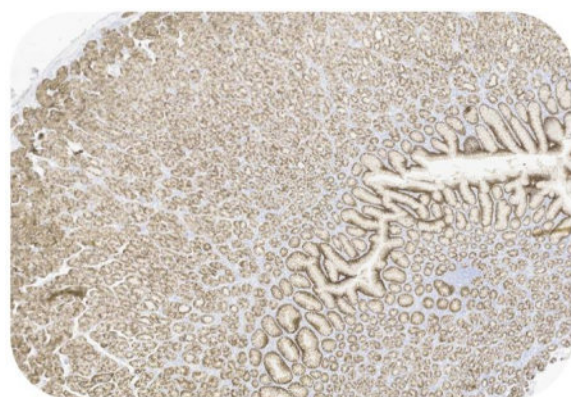
IgG

## Storage

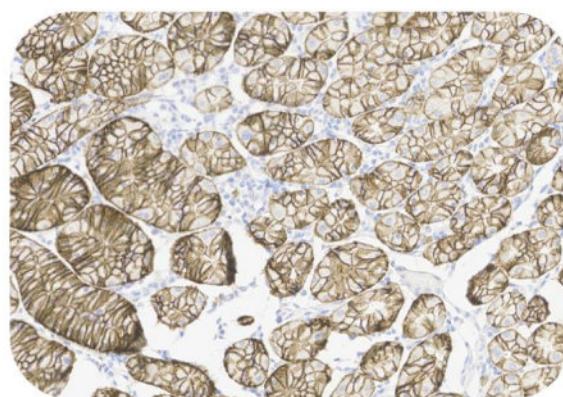
Shipped at 4°C. Store at +4°C short term (1-2 weeks). Upon delivery aliquot. Store at -20°C long term. Avoid freeze / thaw cycle. The shelf life is 30 days from the date of opening.

## Typical Data

### Control Sample



Immunohistochemistry (Formalin/PFA-fixed paraffin-embedded sections) -Recombinant Monoclonal Anti-Claudin-18.2 Antibody, Mouse (3B10) (HCS-S278)  
Human Stomach Tissue, 4X



Immunohistochemistry (Formalin/PFA-fixed paraffin-embedded sections) -Recombinant Monoclonal Anti-Claudin-18.2 Antibody, Mouse (3B10) (HCS-S278)  
Human Stomach Tissue, 20X

### Immunohistochemical analysis of paraffin embedded human stomach tissue labelled with HCS-S278 at 1/1000 dilution.

Perform heat mediated antigen retrieval with Tris/EDTA buffer pH 9.0 before commencing with IHC staining protocol.

Discounts, Gifts,  
and more!

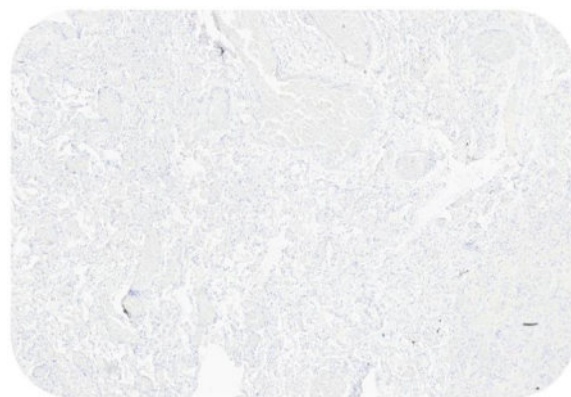


# Recombinant Monoclonal Anti-Claudin-18.2 Antibody, Mouse (3B10)

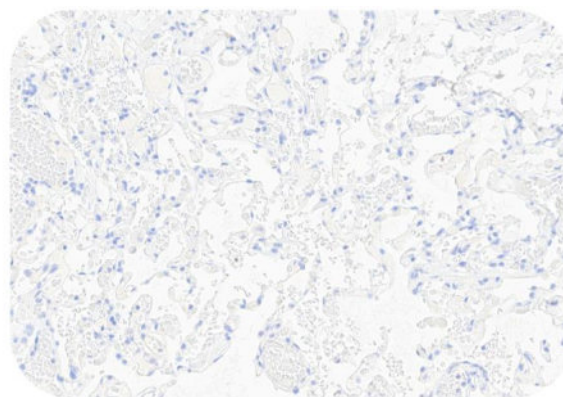
Catalog # HCS-S278



BIOSYSTEMS  
**Acro**



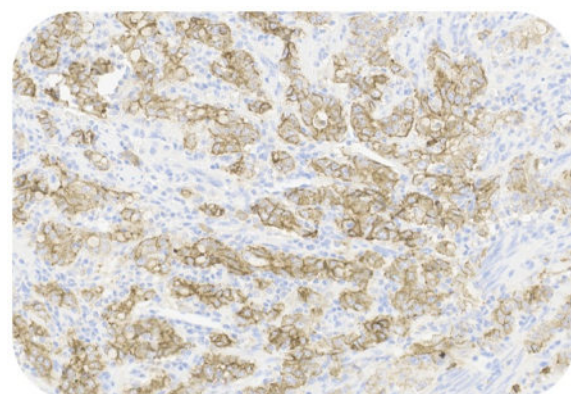
Immunohistochemistry (Formalin/PFA-fixed paraffin-embedded sections) -Recombinant Monoclonal Anti-Claudin-18.2 Antibody, Mouse (3B10) (HCS-S278)  
Human Lung Tissue, 4X



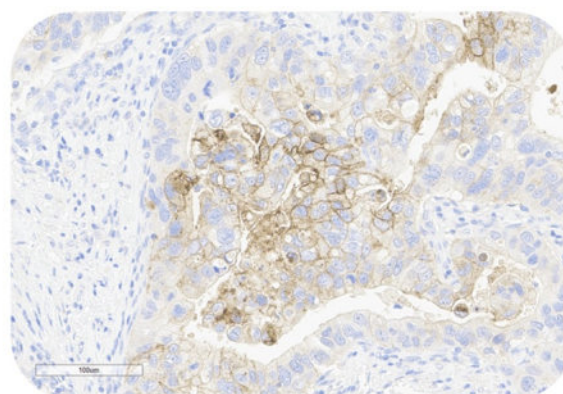
Immunohistochemistry (Formalin/PFA-fixed paraffin-embedded sections) -Recombinant Monoclonal Anti-Claudin-18.2 Antibody, Mouse (3B10) (HCS-S278)  
Human Lung Tissue, 20X

Immunohistochemical analysis of paraffin-embedded human lung tissue labeling Claudin-18.2 with HCS-S278 at 1/1000 dilution, followed by Goat Anti-Mouse IgG H&L (HRP) ready to use. The staining in the lung tissue sample was negative. Counter stained with Hematoxylin. Perform heat mediated antigen retrieval with Tris/EDTA buffer pH 9.0 before commencing with IHC staining protocol.

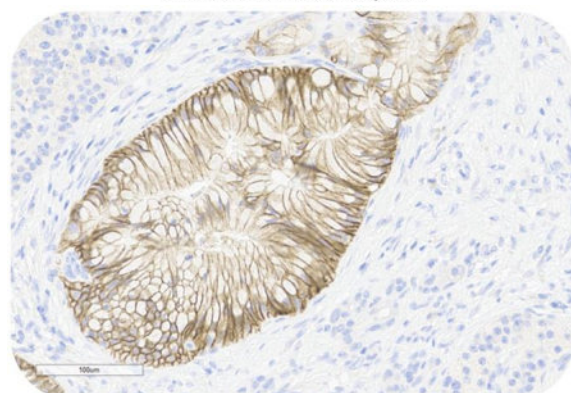
## Cancer Sample



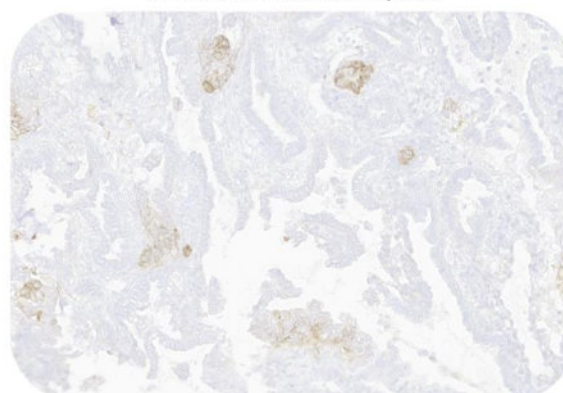
Immunohistochemistry (Formalin/PFA-fixed paraffin-embedded sections) -Recombinant Monoclonal Anti-Claudin-18.2 Antibody, Mouse (3B10) (HCS-S278)  
Human Gastric Cancer, 20X



Immunohistochemistry (Formalin/PFA-fixed paraffin-embedded sections) -Recombinant Monoclonal Anti-Claudin-18.2 Antibody, Mouse (3B10) (HCS-S278)  
Human Colorectal Cancer, 20X



Immunohistochemistry (Formalin/PFA-fixed paraffin-embedded sections) -Recombinant Monoclonal Anti-Claudin-18.2 Antibody, Mouse (3B10) (HCS-S278)  
Human Pancreatic Cancer, 20X



Immunohistochemistry (Formalin/PFA-fixed paraffin-embedded sections) -Recombinant Monoclonal Anti-Claudin-18.2 Antibody, Mouse (3B10) (HCS-S278)  
Human Ovarian Cancer, 20X

Immunohistochemical analysis of paraffin-embedded human cancer tissue labeling Claudin-18.2 with HCS-S278 at 1/1000 dilution, followed by Goat Anti-Mouse IgG H&L (HRP) ready to use. Membranous staining on tumor cells is observed. Counter stained with Hematoxylin. Perform heat mediated antigen retrieval with Tris/EDTA buffer pH 9.0 before commencing with IHC staining protocol.

Discounts, Gifts,  
and more!



➤ [www.acrobiosystems.com](http://www.acrobiosystems.com)