



## Synonym

GPC3,OCI5,Glypican-3,GTR2-2,MXR7,DGSX,SDYS ,SGB,SGBS,SGBS1

## Source

Human Glypican 3, His Tag, premium grade(GP3-H52H4) is expressed from human 293 cells (HEK293). It contains AA Gln 25 - His 559 (Accession # [P51654-1](#)).

Predicted N-terminus: Gln 25 & Ser 359

*It is produced under our rigorous quality control system that incorporates a comprehensive set of tests including sterility and endotoxin tests. Product performance is carefully validated and tested for compatibility for cell culture use or any other applications in the early preclinical stage. When ready to transition into later clinical phases, we also offer a custom GMP protein service that tailors to your needs. We will work with you to customize and develop a GMP-grade product in accordance with your requests that also meets the requirements for raw and ancillary materials use in cell manufacturing of cell-based therapies.*

## Molecular Characterization

Glypican 3(Gln 25 - His 559)  
P51654-1 Poly-his

This protein carries a polyhistidine tag at the C-terminus.

This protein contains a furin-like convertase cleavage site, 355-RQYR-358, and will be partially processed into N and C-terminal fragment with calculated MW of 38.1 kDa and 24.6 kDa respectively. The protein migrates as 30 kDa, 40 kDa and 65-80 kDa when calibrated against [Star Ribbon Pre-stained Protein Marker](#) under reducing (R) condition (SDS-PAGE) due to glycosylation.

## Endotoxin

Less than 0.01 EU per µg by the LAL method.

## Sterility

Negative

## Mycoplasma

Negative.

## Purity

>90% as determined by SDS-PAGE.

>90% as determined by SEC-MALS.

## Formulation

Lyophilized from 0.22 µm filtered solution in PBS, pH7.4 with trehalose as protectant.

Contact us for customized product form or formulation.

## Reconstitution

Please see Certificate of Analysis for specific instructions.

*For best performance, we strongly recommend you to follow the reconstitution protocol provided in the CoA.*

## Storage

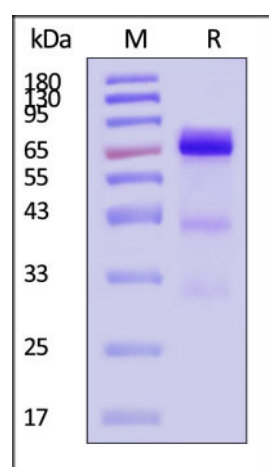
For long term storage, the product should be stored at lyophilized state at -20°C or lower.

*Please avoid repeated freeze-thaw cycles.*

This product is stable after storage at:

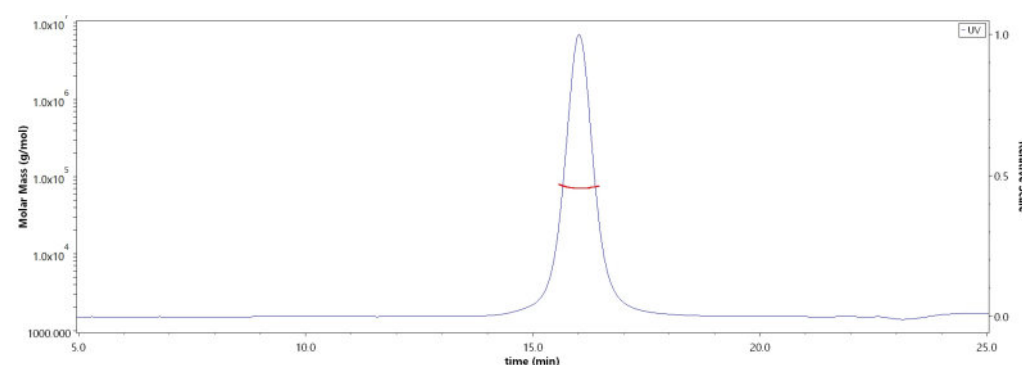
- -20°C to -70°C for 12 months in lyophilized state;
- -70°C for 3 months under sterile conditions after reconstitution.

## SDS-PAGE



Human Glypican 3, His Tag, premium grade on SDS-PAGE under reducing (R) condition. The gel was stained with Coomassie Blue. The purity of the protein is greater than 90% (With [Star Ribbon Pre-stained Protein Marker](#)).

## SEC-MALS



The purity of Human Glypican 3, His Tag, premium grade (Cat. No. GP3-H52H4) is more than 90% and the molecular weight of this protein is around 61-75 kDa verified by SEC-MALS.

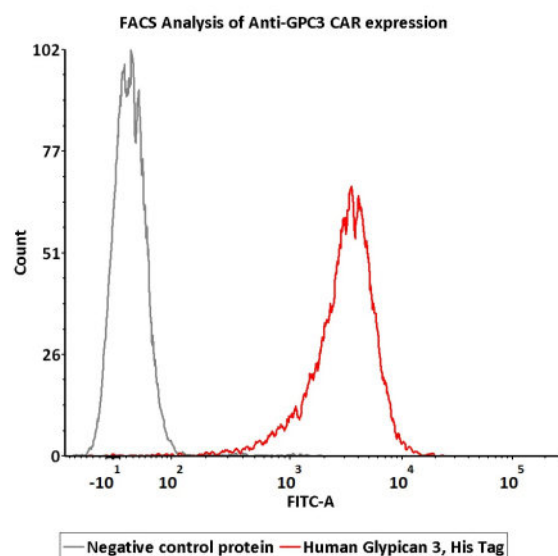
Discounts, Gifts,  
and more!





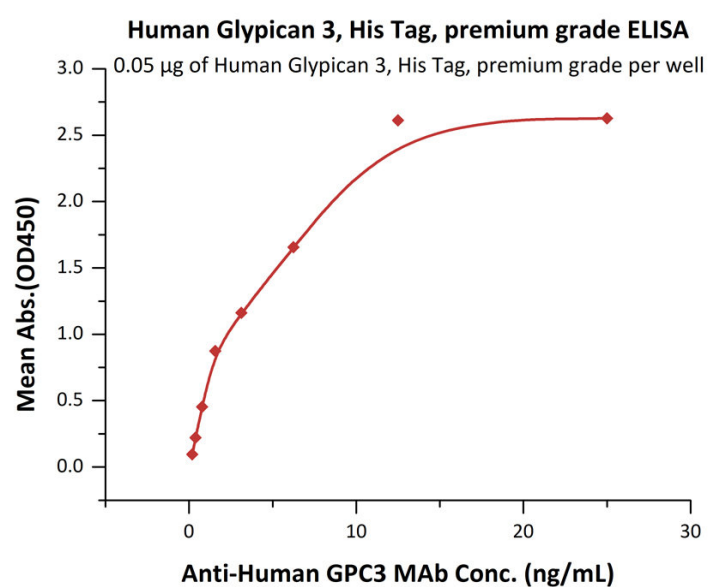
[Report](#)

## Bioactivity-FACS



2e5 of anti-GPC3 CAR-293 cells were stained with 100  $\mu$ L of 3  $\mu$ g/mL of Human Glypican 3, His Tag, premium grade (Cat. No. GP3-H52H4) and negative control protein respectively, washed and then followed by FITC anti-his tag antibody and analyzed with FACS (Routinely tested).

## Bioactivity-ELISA



Immobilized Human Glypican 3, His Tag, premium grade (Cat. No. GP3-H52H4) at 0.5  $\mu$ g/mL (100  $\mu$ L/well) can bind Anti-Human GPC3 MAb with a linear range of 0.1-12.5 ng/mL (QC tested).

## Bioactivity-SPR

Discounts, Gifts,  
and more!

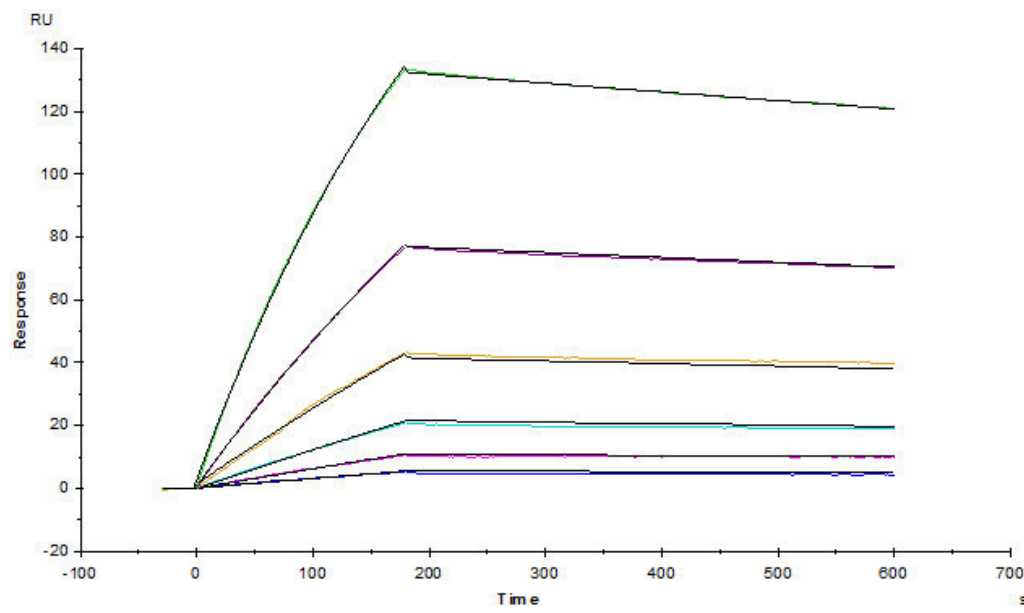


# Human Glypican 3 / GPC3 Protein, His Tag, premium grade

Catalog # GP3-H52H4

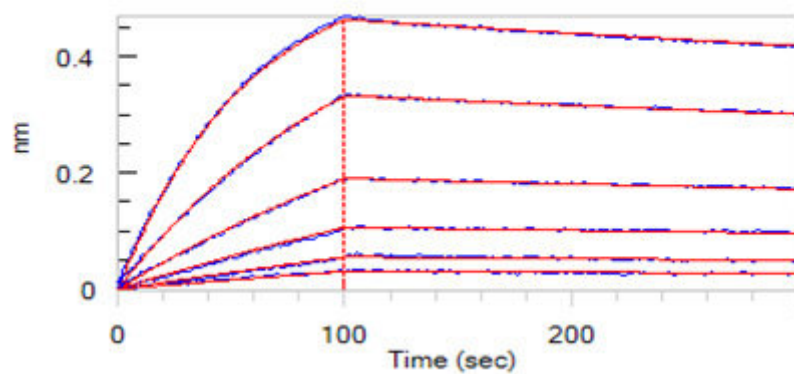


BIOSYSTEMS  
**Acro**  
Surprise Inside!



Anti-human GPC3 MAb (chimeric mouse-human IgG1) captured on CM5 chip via anti-human IgG Fc antibodies surface, can bind Human Glypican 3, His Tag, premium grade (Cat. No. GP3-H52H4) with an affinity constant of 1.33 nM as determined in a SPR assay (Biacore T200) (Routinely tested).

## Bioactivity-BLI



Loaded Anti-Human GPC3 MAb (chimeric mouse-human IgG1) on AHC Biosensor, can bind Human Glypican 3, His Tag, premium grade (Cat. No. GP3-H52H4) with an affinity constant of 1.48 nM as determined in BLI assay (ForteBio Octet Red96e) (Routinely tested).

## Background

Glypican-3 (GPC3) is also known as Intestinal protein OCI-5, GTR2-2, MXR7, which belongs to the glypican family. Glypican 3 / GPC-3 is highly expressed in lung, liver and kidney. Glypican-3 inhibits the dipeptidyl peptidase activity of DPP4. Glypican-3 may be involved in the suppression/modulation of growth in the predominantly mesodermal tissues and organs, and also may play a role in the modulation of IGF2 interactions with its receptor and thereby modulate its function.

## Clinical and Translational Updates

Discounts, Gifts,  
and more!



[www.acrobiosystems.com](http://www.acrobiosystems.com)

7/11/2024