



Synonym

Delta3,delta-like 3 (Drosophila),delta-like protein
3,DLL3,Pudgy,SCDO1,SCDO1delta3

Source

FITC-Labeled Human DLL3, His Tag(DL3-HF2H4) is expressed from human 293 cells (HEK293). It contains AA Ala 27 - Leu 492 (Accession # [Q9NYJ7-1](#)).
Predicted N-terminus: Ala 27

Molecular Characterization

DLL3(Ala 27 - Leu 492)
Q9NYJ7-1 Poly-his

This protein carries a polyhistidine tag at the C-terminus.

The protein has a calculated MW of 50.4 kDa. The protein migrates as 50-55 kDa when calibrated against [Star Ribbon Pre-stained Protein Marker](#) under reducing (R) condition (SDS-PAGE) due to glycosylation.

Conjugate

FITC

Excitation source: 488 nm spectral line, argon-ion laser

Excitation Wavelength: 488 nm

Emission Wavelength: 535 nm

Labeling

The primary amines in the side chains of lysine residues and the N-terminus of the protein are conjugated with FITC using standard chemical labeling method. The residual FITC is removed by molecular sieve treatment during purification process.

Protein Ratio

The FITC to protein molar ratio is 1.5-3.5.

Endotoxin

Less than 1.0 EU per µg by the LAL method.

Purity

>90% as determined by SDS-PAGE.

Formulation

Lyophilized from 0.22 µm filtered solution in PBS, Arginine, pH7.4 with trehalose as protectant.

Contact us for customized product form or formulation.

Reconstitution

Please see Certificate of Analysis for specific instructions.

For best performance, we strongly recommend you to follow the reconstitution protocol provided in the CoA.

Storage

For long term storage, the product should be stored at lyophilized state at -20°C or lower.

Please protect from light and avoid repeated freeze-thaw cycles.

This product is stable after storage at:

- -20°C to -70°C for 12 months in lyophilized state;
- -70°C for 3 months under sterile conditions after reconstitution.

SDS-PAGE

Discounts, Gifts,
and more!

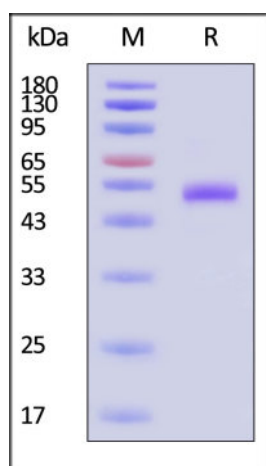


FITC-Labeled Human DLL3 Protein, His Tag

Catalog # DL3-HF2H4

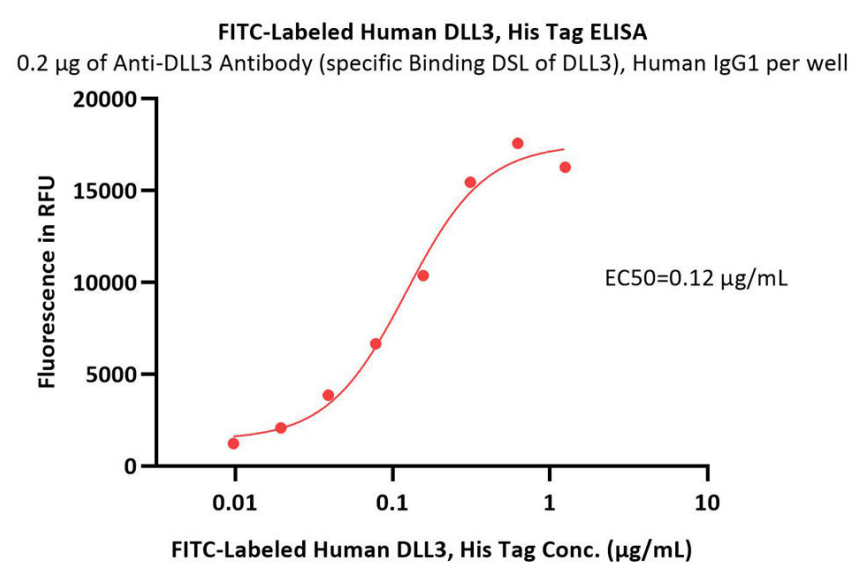


BIOSYSTEMS
Acro
Surprise Inside!



FITC-Labeled Human DLL3, His Tag on SDS-PAGE under reducing (R) condition. The gel was stained with Coomassie Blue. The purity of the protein is greater than 90% (With [Star Ribbon Pre-stained Protein Marker](#)).

Bioactivity-ELISA



Immobilized Anti-DLL3 Antibody (specific Binding DSL of DLL3), Human IgG1 at 2 µg/mL (100 µL/well) can bind FITC-Labeled Human DLL3, His Tag (Cat. No. DL3-HF2H4) with a linear range of 0.01-0.313 µg/mL (QC tested).

Background

Delta-like protein 3 (DLL3) is a transmembrane protein that belongs to the Delta/Serrate/Lag-2 (DSL) family of Notch ligands. May be required to divert neurons along a specific differentiation pathway. Plays a role in the formation of somite boundaries during segmentation of the paraxial mesoderm. DLL3 protein is expressed on the surface of tumor cells but not in normal adult tissues.

Clinical and Translational Updates

Discounts, Gifts,
and more!



➤ www.acrobiosystems.com

6/26/2024