

Synonym

SELE,RP1-117P20.2,CD62E,ELAM1,ESEL,LECAM2,E-Selectin

SourceHuman E-Selectin, His Tag (CDE-H5222) is expressed from human 293 cells (HEK293). It contains AA Trp 22 - Pro 556 (Accession # [NP_000441.2](#)).

Predicted N-terminus: Trp 22

Molecular Characterization

E-Selectin(Trp 22 - Pro 556) NP_000441.2	Poly-his
---	----------

This protein carries a polyhistidine tag at the C-terminus.

The protein has a calculated MW of 59.5 kDa. The protein migrates as 67-96 kDa under reducing (R) condition (SDS-PAGE) due to glycosylation.

Endotoxin

Less than 1.0 EU per µg by the LAL method.

Purity

>95% as determined by SDS-PAGE.

Formulation

Lyophilized from 0.22 µm filtered solution in PBS, pH7.4. Normally trehalose is added as protectant before lyophilization.

Contact us for customized product form or formulation.

Reconstitution

Please see Certificate of Analysis for specific instructions.

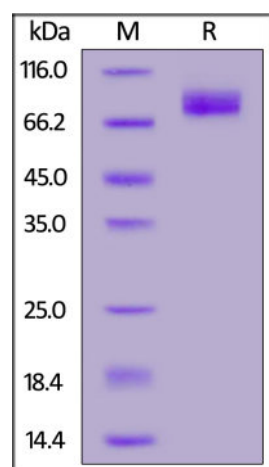
*For best performance, we strongly recommend you to follow the reconstitution protocol provided in the CoA.***Storage**

For long term storage, the product should be stored at lyophilized state at -20°C or lower.

Please avoid repeated freeze-thaw cycles.

This product is stable after storage at:

- -20°C to -70°C for 12 months in lyophilized state;
- -70°C for 3 months under sterile conditions after reconstitution.

SDS-PAGE

Human E-Selectin, His Tag on SDS-PAGE under reducing (R) condition. The gel was stained overnight with Coomassie Blue. The purity of the protein is greater than 95%.

Background

E-Selectin is also known as CD62 antigen-like family member E (CD62E), endothelial-leukocyte adhesion molecule 1 (ELAM-1), or leukocyte-endothelial cell adhesion molecule 2 (LECAM2), a member of the Selectin family, is a 107-115 kDa cell surface glycoprotein. It is transiently expressed on vascular endothelial cells in response to IL-1 β and TNF α . E selectin has a cassette structure: an N-terminal, C-type lectin domain, an EGF (epidermal-growth-factor)-like domain, 6 Sushi domain (SCR repeat) units, a transmembrane domain (TM) and an intracellular cytoplasmic tail (cyto). During inflammation, E-selectin plays an important part in recruiting leukocytes to the site of injury. The local release of cytokines IL-1 and TNF- α by damaged cells induces the over-expression of E-selectin on endothelial cells of nearby blood vessels. E-selectin mediates the adhesion of tumor cells to endothelial cells, by binding to E-selectin ligands expressed by neutrophils,

monocytes, eosinophils, memory-effector T-like lymphocytes, natural killer cells or cancer cells. Furthermore, a number of studies have reported that levels of E-Selectin may be elevated in subjects with a variety of pathological conditions.

Clinical and Translational Updates

Please contact us via TechSupport@acrobiosystems.com if you have any question on this product.