

# Human Complement Receptor type 2 Protein, His Tag (MALS verified)

Catalog # CD2-H52H4



BIOSYSTEMS  
**Acro**

## Synonym

CD21

## Source

Human Complement Receptor type 2 Protein, His Tag(CD2-H52H4) is expressed from human 293 cells (HEK293). It contains AA Ile 21 - Arg 971 (Accession # [P20023-1](#)).

Predicted N-terminus: Ile 21

## Molecular Characterization

CR2(Ile 21 - Arg 971)  
P20023-1 Poly-his

This protein carries a polyhistidine tag at the C-terminus.

The protein has a calculated MW of 106.1 kDa. The protein migrates as 110-120 kDa under reducing (R) condition (SDS-PAGE) due to glycosylation.

## Endotoxin

Less than 1.0 EU per µg by the LAL method.

## Purity

>95% as determined by SDS-PAGE.

## Formulation

Lyophilized from 0.22 µm filtered solution in PBS, pH7.4 with trehalose as protectant.

Contact us for customized product form or formulation.

## Reconstitution

Please see Certificate of Analysis for specific instructions.

*For best performance, we strongly recommend you to follow the reconstitution protocol provided in the CoA.*

## Storage

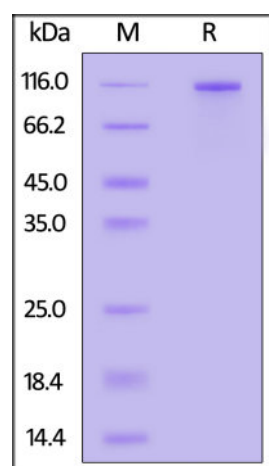
For long term storage, the product should be stored at lyophilized state at -20°C or lower.

*Please avoid repeated freeze-thaw cycles.*

This product is stable after storage at:

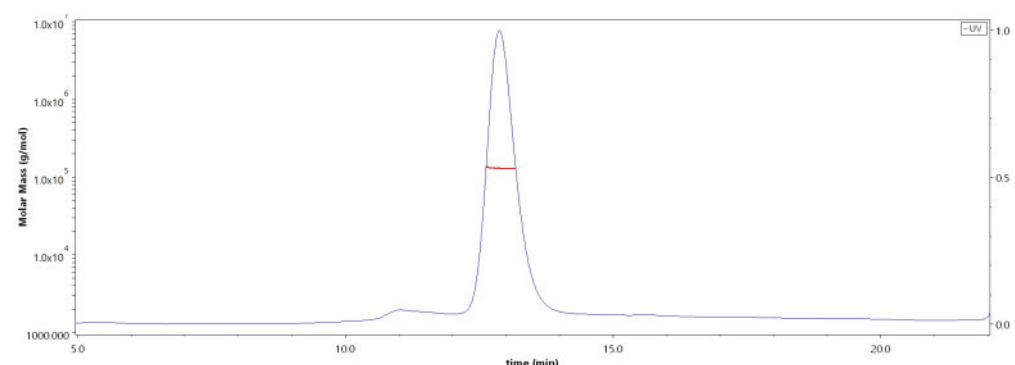
- -20°C to -70°C for 12 months in lyophilized state;
- -70°C for 3 months under sterile conditions after reconstitution.

## SDS-PAGE



Human Complement Receptor type 2 Protein, His Tag on SDS-PAGE under reducing (R) condition. The gel was stained with Coomassie Blue. The purity of the protein is greater than 95%.

## SEC-MALS



The purity of Human Complement Receptor type 2 Protein, His Tag (Cat. No. CD2-H52H4) is more than 85% and the molecular weight of this protein is around 120-140 kDa verified by SEC-MALS.

[Report](#)

## Background

Epstein-Barr virus (EBV), also designated human herpesvirus 4 (HHV-4), is a member of the herpesvirus family and is one of the most common human viruses. EBV binds to the cell surface receptor 2 (CD21/CR2) on human B cells using its major envelope glycoprotein 350 (gp350) and, as such, the EBV gp350 Envelope Protein,

Discounts, Gifts,  
and more!



➤ [www.acrobiosystems.com](http://www.acrobiosystems.com)

11/8/2024

# Human Complement Receptor type 2 Protein, His Tag (MALS verified)

Catalog # CD2-H52H4



also designated the EBV envelope glycoprotein complex 250/350, is crucial in mediating the initial stages of EBV infection. The EBV gp350 Envelope Protein is expressed on virion envelope as well as EBV producer cells.

## Clinical and Translational Updates

Discounts, Gifts,  
and more!



➤ [www.acrobiosystems.com](http://www.acrobiosystems.com)