



## Synonym

CK-BETA-8, CKb8, Ckb-8, Ckb-8-1, MIP-3, MIP3, MPIF-1, SCYA23, hmpr-2a

## Source

Human CCL23 Protein, His Tag(CC3-H5244) is expressed from human 293 cells (HEK293). It contains AA Arg 22 - Asn 120 (Accession # [P55773-1](#)).

Predicted N-terminus: His

## Molecular Characterization

Poly-his CCL23(Arg 22 - Asn 120)  
P55773-1

This protein carries a polyhistidine tag at the N-terminus.

The protein has a calculated MW of 13.3 kDa. The protein migrates as 12-17 kDa when calibrated against [Star Ribbon Pre-stained Protein Marker](#) under reducing (R) condition (SDS-PAGE) due to glycosylation.

## Endotoxin

Less than 1.0 EU per µg by the LAL method.

## Purity

>90% as determined by SDS-PAGE.

>90% as determined by SEC-MALS.

## Formulation

Lyophilized from 0.22 µm filtered solution in PBS, pH7.4 with trehalose as protectant.

Contact us for customized product form or formulation.

## Reconstitution

Please see Certificate of Analysis for specific instructions.

*For best performance, we strongly recommend you to follow the reconstitution protocol provided in the CoA.*

## Storage

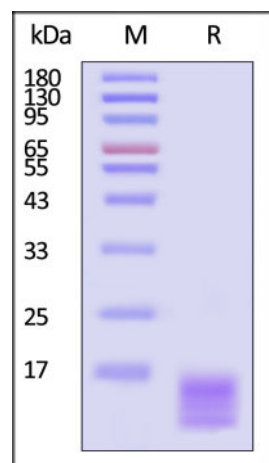
For long term storage, the product should be stored at lyophilized state at -20°C or lower.

*Please avoid repeated freeze-thaw cycles.*

This product is stable after storage at:

- -20°C to -70°C for 12 months in lyophilized state;
- -70°C for 3 months under sterile conditions after reconstitution.

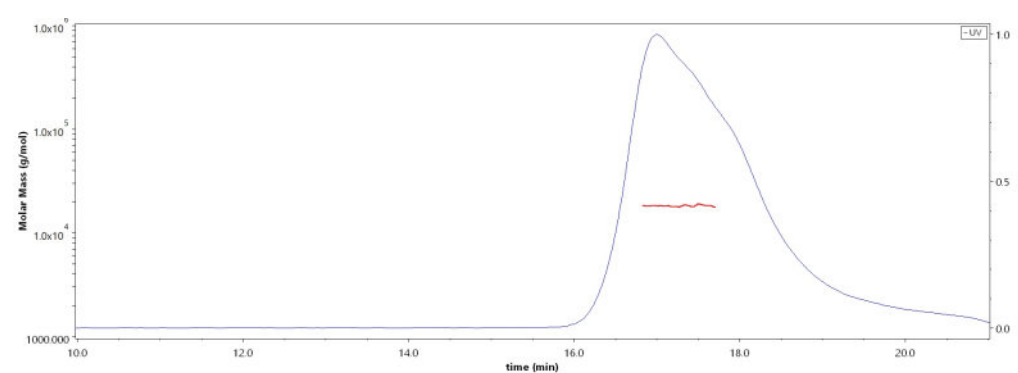
## SDS-PAGE



Human CCL23 Protein, His Tag on SDS-PAGE under reducing (R) condition. The gel was stained with Coomassie Blue. The purity of the protein is greater than 90% (With [Star Ribbon Pre-stained Protein Marker](#)).

## Bioactivity-ELISA

## SEC-MALS



The purity of Human CCL23 Protein, His Tag (Cat. No. CC3-H5244) is more than 90% and the molecular weight of this protein is around 15-21 kDa verified by SEC-MALS.

[Report](#)

Discounts, Gifts,  
and more!

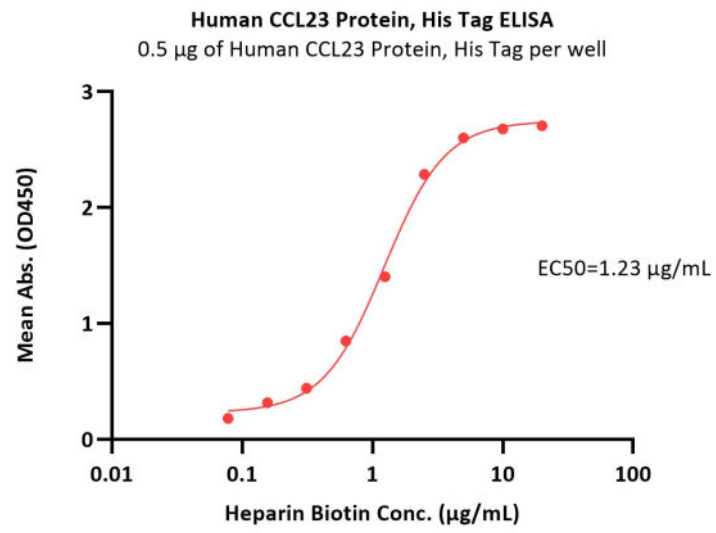


# Human CCL23 Protein, His Tag (MALS verified)

Catalog # CC3-H5244



BIOSYSTEMS  
**Acro**  
Surprise Inside!



Immobilized Human CCL23 Protein, His Tag (Cat. No. CC3-H5244) at 5 µg/mL (100 µL/well) can bind Heparin Biotin with a linear range of 0.078-2.5 µg/mL (QC tested).

## Background

This gene is one of several chemokine genes clustered on the q-arm of chromosome 17. Chemokines form a superfamily of secreted proteins involved in immunoregulatory and inflammatory processes. The superfamily is divided into four subfamilies based on the arrangement of the N-terminal cysteine residues of the mature peptide. This chemokine, a member of the CC subfamily, displays chemotactic activity on resting T lymphocytes and monocytes, lower activity on neutrophils and no activity on activated T lymphocytes. The protein is also a strong suppressor of colony formation by a multipotential hematopoietic progenitor cell line. In addition, the product of this gene is a potent agonist of the chemokine (C-C motif) receptor 1. Alternative splicing results in multiple transcript variants that encode different isoforms.

## Clinical and Translational Updates

Discounts, Gifts,  
and more!



[www.acrobiosystems.com](http://www.acrobiosystems.com)

11/4/2024