



Synonym

CDH6, CAD6, KCAD, K-cadherin, Cadherin-6

Source

Cynomolgus / Rhesus macaque Cadherin-6, His Tag (CA6-C52H3) is expressed from human 293 cells (HEK293). It contains AA Thr 22 - Gly 614 (Accession # [G7MUQ7-1](#)). In the region Thr 22 - Gly 614, the AA sequence of Cynomolgus and Rhesus macaque Cadherin-6 are homologous.

Predicted N-terminus: Thr 22

Molecular Characterization

Cadherin-6(Thr 22 - Gly 614)	Poly-his
G7MUQ7-1	

This protein carries a polyhistidine tag at the C-terminus.

The protein has a calculated MW of 67.9 kDa. The protein migrates as 80-95 kDa when calibrated against [Star Ribbon Pre-stained Protein Marker](#) under reducing (R) condition (SDS-PAGE) due to glycosylation.

Endotoxin

Less than 1.0 EU per µg by the LAL method.

Purity

>90% as determined by SDS-PAGE.

Formulation

Lyophilized from 0.22 µm filtered solution in PBS, pH7.4 with trehalose as protectant.

Contact us for customized product form or formulation.

Reconstitution

Please see Certificate of Analysis for specific instructions.

For best performance, we strongly recommend you to follow the reconstitution protocol provided in the CoA.

Storage

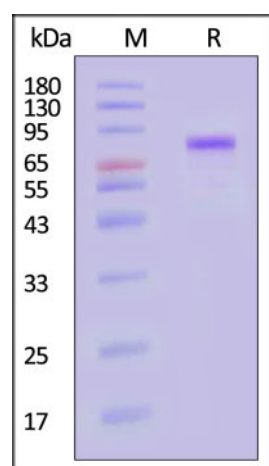
For long term storage, the product should be stored at lyophilized state at -20°C or lower.

Please avoid repeated freeze-thaw cycles.

This product is stable after storage at:

- -20°C to -70°C for 12 months in lyophilized state;
- -70°C for 3 months under sterile conditions after reconstitution.

SDS-PAGE

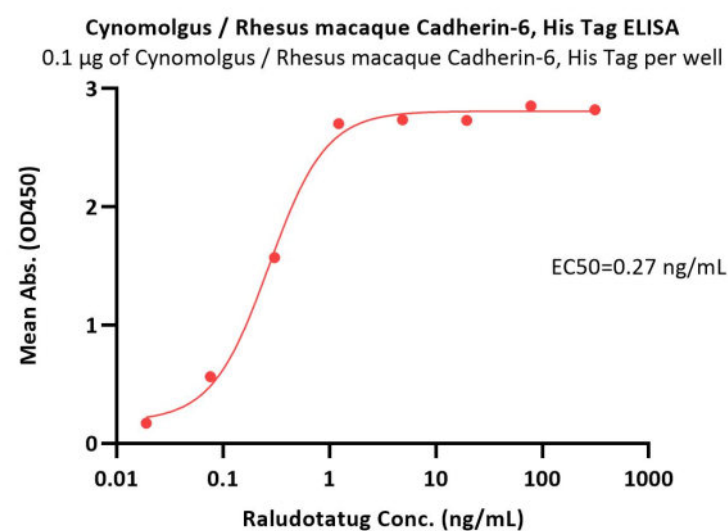
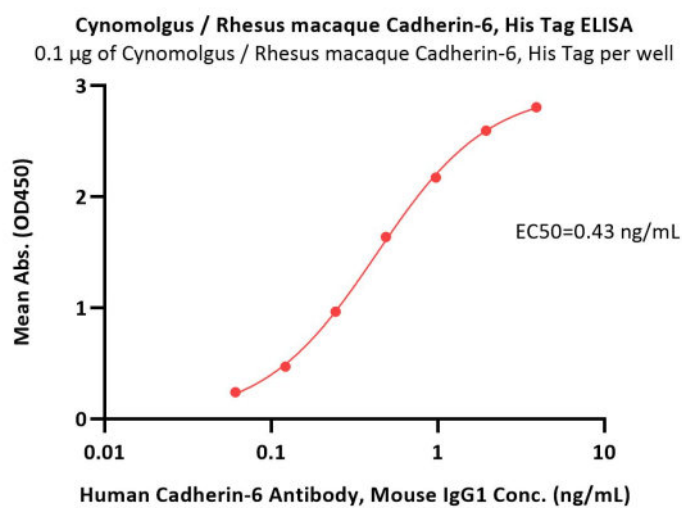


Cynomolgus / Rhesus macaque Cadherin-6, His Tag on SDS-PAGE under reducing (R) condition. The gel was stained with Coomassie Blue. The purity of the protein is greater than 90% (With [Star Ribbon Pre-stained Protein Marker](#)).

Bioactivity-ELISA

Discounts, Gifts,
and more!





Immobilized Cynomolgus / Rhesus macaque Cadherin-6, His Tag (Cat. No. CA6-C52H3) at 1 µg/mL (100 µL/well) can bind Human Cadherin-6 Antibody, Mouse IgG1 with a linear range of 0.1-1 ng/mL (QC tested).

Immobilized Cynomolgus / Rhesus macaque Cadherin-6, His Tag (Cat. No. CA6-C52H3) at 1 µg/mL (100 µL/well) can bind Raludotatug with a linear range of 0.02-1 ng/mL (Routinely tested).

Background

Cadherin-6 (CDH6) is also known as Kidney cadherin (K-cadherin or KCAD), is a type II classical cadherin from the cadherin superfamily. Cadherins are calcium-dependent cell adhesion proteins. They preferentially interact with themselves in a homophilic manner in connecting cells; cadherins may thus contribute to the sorting of heterogeneous cell types. CDH6 / KCAD contains five cadherin domains. CDH6 is highly expressed in brain, cerebellum, and kidney. Lung, pancreas, and gastric mucosa show a weak expression and also expressed in certain liver and kidney carcinomas.

Clinical and Translational Updates

Discounts, Gifts,
and more!

