



**Source**

Monoclonal Anti-Human IgM mu Chain Antibody-Acrininium ester (M3HC) is a chimeric monoclonal antibody recombinantly expressed from HEK293, which combines the variable region of a mouse monoclonal antibody with Human constant domain.

**Clone**

M3HC

**Isotype**

Human IgG1

**Conjugate**

Acridine ester

**Antibody Type**

Recombinant Monoclonal

**Reactivity**

Human

**Immunogen**

Human IgM mu Chain.

**Specificity**

This product is a specific antibody specifically reacts with Anti-Human IgM.

**Purity**

>90% as determined by SDS-PAGE.

>95% as determined by SEC-MALS.

**Purification**

Protein A purified/ Protein G purified

**Formulation**

Lyophilized from 0.22 µm filtered solution in PBS, pH6.3 with trehalose as protectant.

Contact us for customized product form or formulation.

**Reconstitution**

Please see Certificate of Analysis for specific instructions.

*For best performance, we strongly recommend you to follow the reconstitution protocol provided in the CoA.*

**Storage**

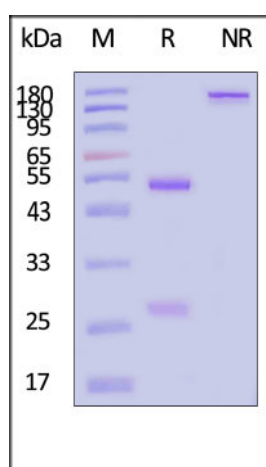
For long term storage, the product should be stored at lyophilized state at -20°C or lower.

*Please avoid repeated freeze-thaw cycles.*

This product is stable after storage at:

- -20°C to -70°C for 12 months in lyophilized state;
- -70°C for 3 months under sterile conditions after reconstitution.

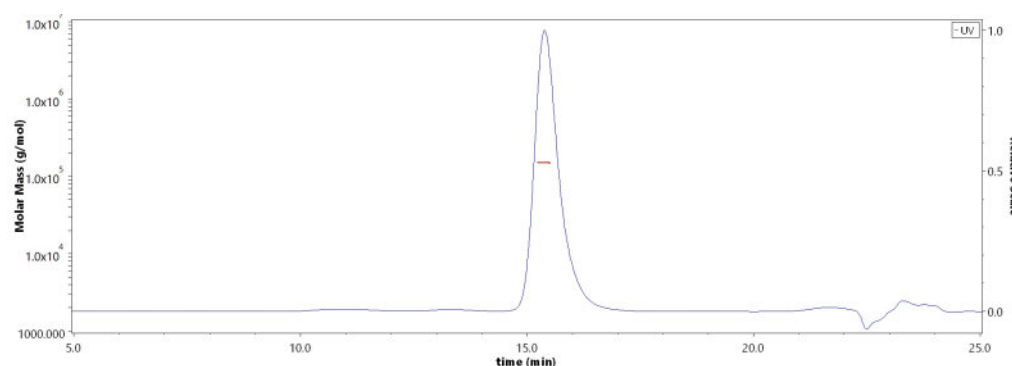
**SDS-PAGE**



Monoclonal Anti-Human IgM mu Chain Antibody-Acrininium ester (M3HC) on SDS-PAGE under reducing (R) and non-reducing (NR) conditions. The gel was stained with Coomassie Blue. The purity of the protein is greater than 90% (With [Star Ribbon Pre-stained Protein Marker](#)).

**Bioactivity-MPCLIA**

**SEC-MALS**



The purity of Monoclonal Anti-Human IgM mu Chain Antibody-Acrininium ester (M3HC) (Cat. No. AHM-S300) is more than 95% and the molecular weight of this protein is around 140-160 kDa verified by SEC-MALS.

[Report](#)

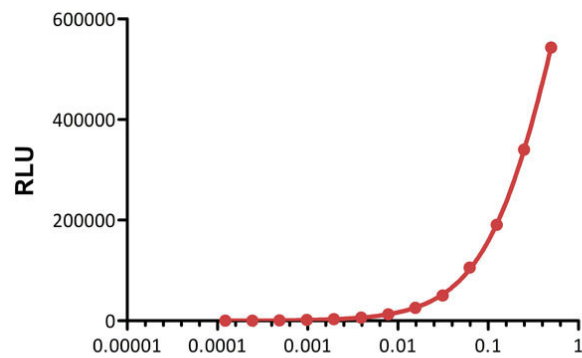
Discounts, Gifts,  
and more!





**Detection of Anti-SARS-CoV-2 Spike RBD Neutralizing Antibody, Chimeric mAb, Human IgM (AM122) by MPCLIA**

Streptavidin-Magnetic Beads: Monoclonal Anti-Human IgM mu Chain Antibody-Acrininium ester(M3HC)

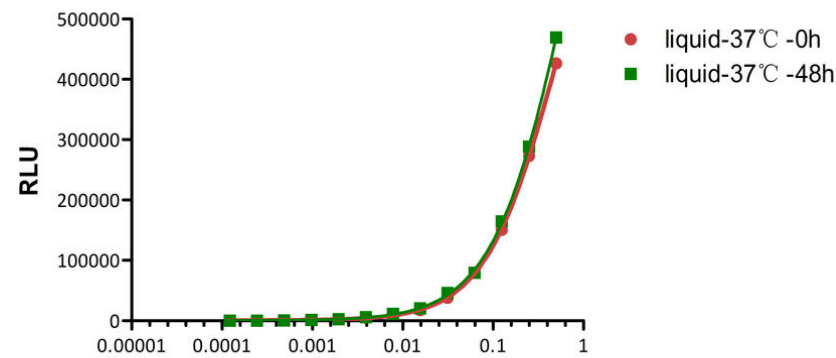


Anti-SARS-CoV-2 Spike RBD Neutralizing Antibody, Chimeric mAb, Human IgM (AM122) Conc. (µg/mL)

Immobilized 0.04 µg /Test of Biotinylated SARS-CoV-2 Spike RBD, His,Avitag(Cat. No.SPD-C82E9) to the Streptavidin-Magnetic Beads (recommended for MPCLIA) (Cat. No. MPC-A006) (10 µg beads/Test), incubated with 100 µL /Test of Anti-SARS-CoV-2 Spike RBD Neutralizing Antibody, Chimeric mAb, Human IgM (AM122) (Cat. No. SPD-M162) at increasing concentration coupled to the Monoclonal Anti-Human IgM mu Chain Antibody-Acrininium ester (M3HC) (MALS verified) (Cat. No. AHM-S300, 0.04 µg /Test). Detection was performed with sensitivity of 0.488 ng/mL in Magnetism particulate chemiluminescence immunoassay (MPCLIA) (KEYSMILE, SMART 6500S) (QC tested).

**Detection of Anti-SARS-CoV-2 Spike RBD Neutralizing Antibody, Chimeric mAb, Human IgM (AM122) by MPCLIA**

Anti-His Tag Antibody (Mouse IgG1)-coupled Magnetic Beads: Monoclonal Anti-Human IgM mu Chain Antibody-Acrininium ester(M3HC)

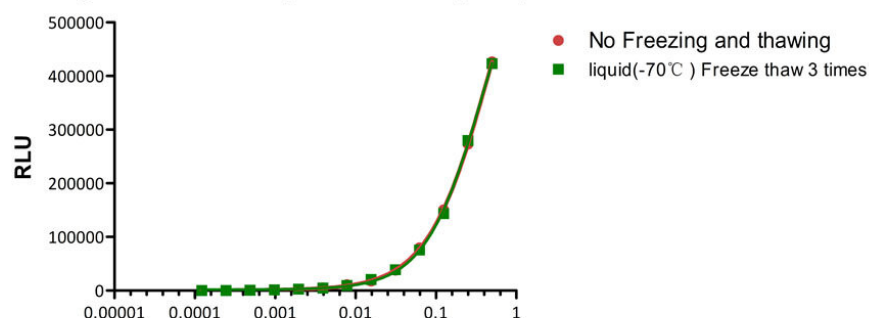


Anti-SARS-CoV-2 Spike RBD Neutralizing Antibody, Chimeric mAb, Human IgM (AM122) Conc. (µg/mL)

The MPCLIA assay shows that Monoclonal Anti-Human IgM mu Chain Antibody-Acrininium ester (M3HC) (MALS verified) (Cat. No. AHM-S300) is stable at 37°C for 48 hours.

**Detection of Anti-SARS-CoV-2 Spike RBD Neutralizing Antibody, Chimeric mAb, Human IgM (AM122) by MPCLIA**

Anti-His Tag Antibody (Mouse IgG1)-coupled Magnetic Beads: Monoclonal Anti-Human IgM mu Chain Antibody-Acrininium ester(M3HC)



Anti-SARS-CoV-2 Spike RBD Neutralizing Antibody, Chimeric mAb, Human IgM (AM122) Conc. (µg/mL)

The MPCLIA assay shows that Monoclonal Anti-Human IgM mu Chain Antibody-Acrininium ester (M3HC) (MALS verified) (Cat. No. AHM-S300) is stable after freezing and thawing 3 times.

**Background**

The Anti-Human IgM-coupled Magnetic Beads are 2.8 µm superparamagnetic particles covalently coupled to a highly affinity Monoclonal anti-human IgM antibody. The beads can be used to capture the Human IgM in Chemiluminescence procedures. It has no-cross-reactivity with Human IgG, IgA or IgE. The Anti-Human IgM-coupled Magnetic Beads is easy to capture the human IgM, and the bounded antibody have no activity lost, this ready to use products could greatly save your protein coupling time and hassle, and help us get the best performance and highly reproducible results.

**Clinical and Translational Updates**

Discounts, Gifts, and more!

